

# WHAT IS PTM LOADGARD



- A Sophisticated Load monitor with on-screen signature analysis powered by PTM Module
- Same dimension as TLG LOADGARD
- Peak or Thru Stroke Monitoring Available



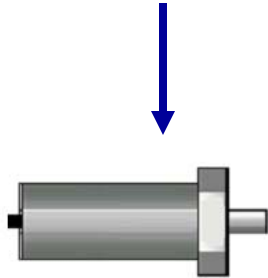
Global Market Solutions

Copyright © 2012 Helm Instrument Co., Inc. All Rights Reserved.

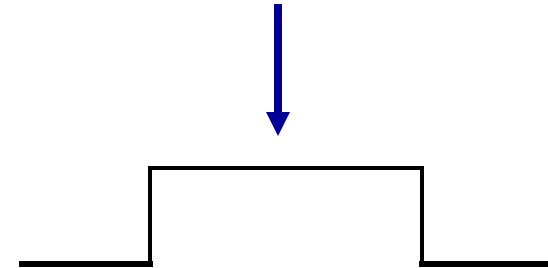


# PTM LOADGARD MODEL TYPES

## THRU STROKE MODEL



## PEAK LOAD MODEL



VS

- Requires Resolver Input
- Look Window Set by Angle
- Angle based Signature
- Support Up to 150SPM Operation
- Load Signature Tracking Alarm by slide position
- Press Curve Alarm Available

- Requires CAM Timing Input
- Look Window Set by Time (msec)
- Time based Signature
- Supports up to 1100SPM Operation
- Load Signature Tracking Alarm by Time based



Global Market Solutions

Copyright © 2012 Helm Instrument Co., Inc. All Rights Reserved.



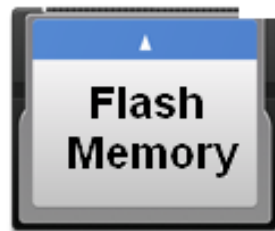
# IMPROVED FEATURES (EWF)

Dual Memory Architecture to Protect System OS with Enhanced Write Filter (EWF) Technology



**Protected!!**

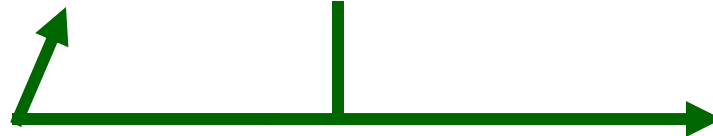
**C: drive**



- Operating System Files



**Data Write**



**D: drive**



- ✓ No More Waiting for Proper Windows System Shutdown.
- ✓ No More Window File Corruption.
- ✓ No More System Booting Problem

- Application Files
- Configuration Data
- Stored Data



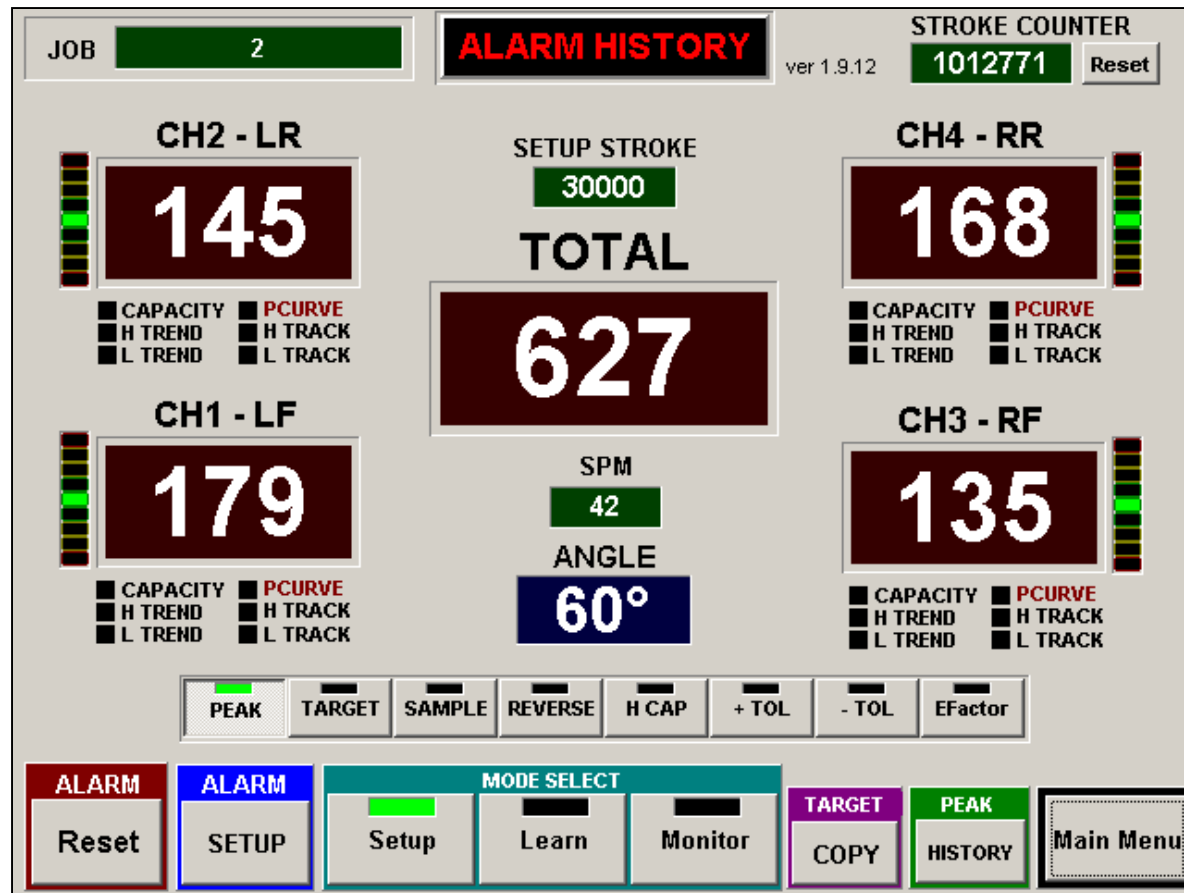
**Global Market Solutions**

Copyright © 2012 Helm Instrument Co., Inc. All Rights Reserved.



# PTM LOADGARD MAIN SCREEN

## PTM4500-TSM (4Ch Frame)



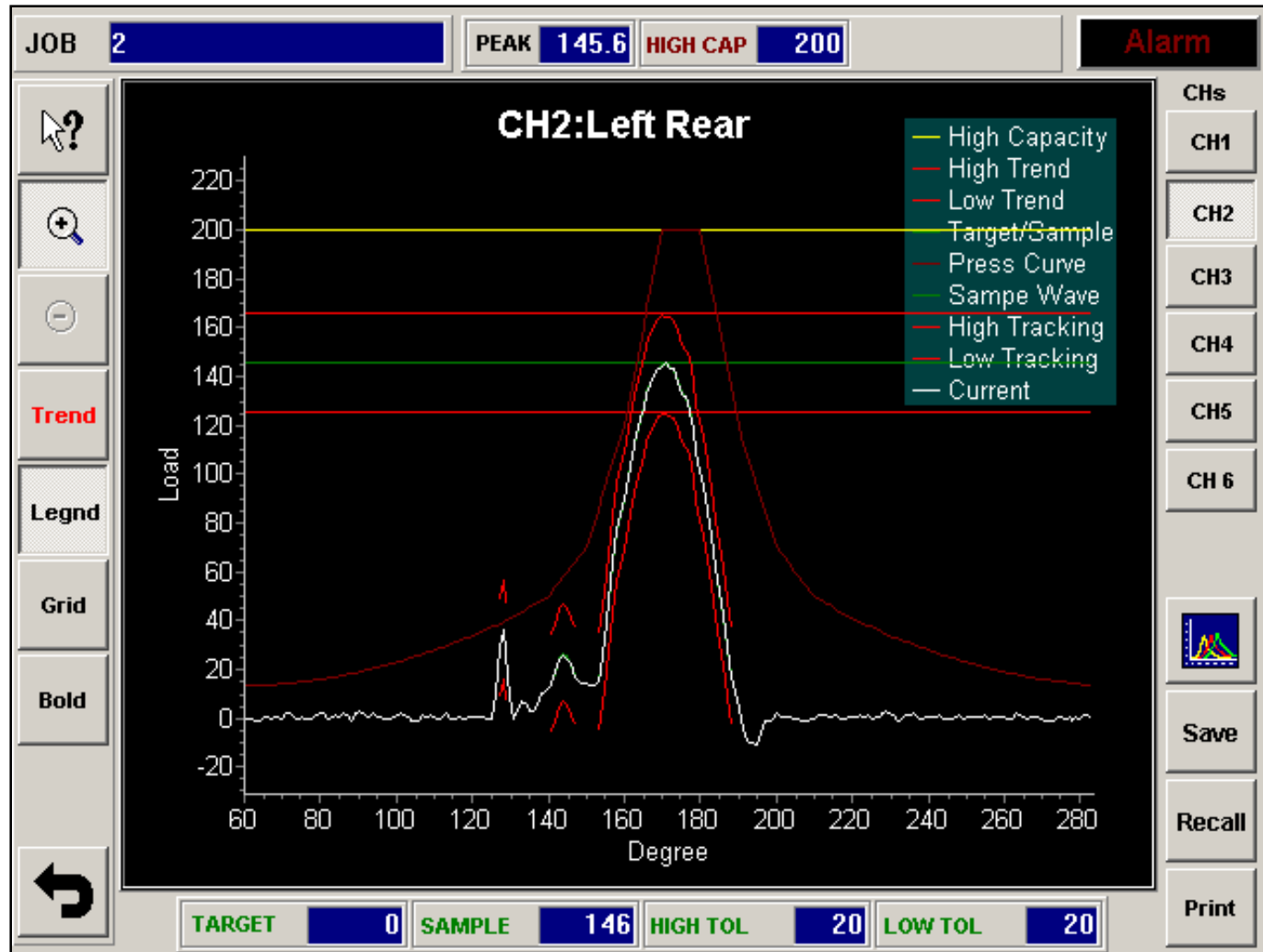
Global Market Solutions

Copyright © 2012 Helm Instrument Co., Inc. All Rights Reserved.



# PTM LOADGARD OVERVIEW

- Sophisticated On-Screen Signature Analysis Features



Global Market Solutions

Copyright © 2012 Helm Instrument Co., Inc. All Rights Reserved.





# PTM LOADGARD OVERVIEW

- Trend Alarm Active In All mode (Setup, Learn, and Monitor mode)

**CURRENT ALARM SETTING**

☒ Group Select \* Setting the value to 0 will disable the alarm you set

	CH 1	CH 2	CH 3	CH 4	CH 5	CH 6
HIGH	200	200	200	200	200	200
TARGET	125	120	127	119	124	130
+ TOL (%)	20	20	20	20	20	20
- TOL (%)	20	20	20	20	20	20
EXP FACTOR	1.5	1.5	1.5	1.5	1.5	1.5
TRACKING ALARM	Enabled	Enabled	Enabled	Enabled	Enabled	Enabled
PRESS CURVE ALARM	Enabled	Enabled	Enabled	Enabled	Enabled	Enabled

**LEARNING CYCLE:** 4 **TOL. TYPE:** Ton Percent

**ALARM WINDOW** 60 — 284 **ADAPTIVE LEARNING:** DISABLED

EDIT ON

Edit

Job Recipe

Download

Save To Recipe

Press Curve Setup

Return



Global Market Solutions

Copyright © 2012 Helm Instrument Co., Inc. All Rights Reserved.



# PTM LOADGARD OVERVIEW

- Tonnage Alarm History

ALARM HISTORY		
DATE	TIME	DESCRIPTION
10/09/2000	09:18:54 AM	- CH2 LOW TRACKING ALARM ( 11.9ton at 136 <sup>3</sup> )
10/09/2000	09:19:03 AM	- CH1 HIGH TREND ALARM
10/09/2000	09:19:03 AM	- CH1 HIGH TRACKING ALARM ( 59.8ton at 150 <sup>3</sup> )
10/09/2000	09:19:03 AM	- CH2 LOW TREND ALARM
10/09/2000	09:19:03 AM	- CH2 LOW TRACKING ALARM ( 11.5ton at 136 <sup>3</sup> )
10/09/2000	09:19:03 AM	- CH3 LOW TREND ALARM
10/09/2000	09:19:03 AM	- CH3 LOW TRACKING ALARM ( 4.0ton at 135 <sup>3</sup> )
10/09/2000	09:19:11 AM	- CH1 HIGH TREND ALARM
10/09/2000	09:19:11 AM	- CH1 HIGH TRACKING ALARM ( 61.3ton at 150 <sup>3</sup> )
10/09/2000	09:19:11 AM	- CH2 LOW TREND ALARM
10/09/2000	09:19:11 AM	- CH2 LOW TRACKING ALARM ( 11.5ton at 136 <sup>3</sup> )
10/09/2000	09:19:40 AM	- CH1 HIGH TREND ALARM
10/09/2000	09:19:40 AM	- CH1 HIGH TRACKING ALARM ( 61.2ton at 150 <sup>3</sup> )
10/09/2000	09:19:40 AM	- CH2 LOW TREND ALARM
10/09/2000	09:19:40 AM	- CH2 LOW TRACKING ALARM ( 12.1ton at 136 <sup>3</sup> )



Global Market Solutions

Copyright © 2012 Helm Instrument Co., Inc. All Rights Reserved.



# FEATURE SUMMARY

## Four Channels of Continuous Strain Gage based force monitoring with Signature Analysis

- 10.4" Color touch screen Panel PC display, 4G Compact Flash Drive with 2G IDE Flash Dual Memory Modules
- Windows XP Embedded OS with EWF enabled for complete system files protection
- Internal power supply configured for 110/220 VAC operation
- RESOVLER Input for press position
- Implementation of press curve data for enhanced through the stroke monitoring
- Overlay a reference signature with the active signature for immediate visual detection of forming deviations.
- Display and active Thru-Stroke force monitoring (force versus position)
- Machine SPM (Strokes per Minute) display, with Parts Counter
- Good Part trend sampling routine with Adaptive learning feature
- Benchmark force signatures (tooling protection and part quality alarms)
- Adjustable capacity and discreet high and low alarms
- Stores last 40,000 peak/ Hard Hit tonnage history values & On screen graph with SPC Charts
- Automatic storage of last 500 load signatures; ability to overlay and display multiple signatures
- Automatic storage of **Hard Hit** Signatures (Last 1000);
- Automatic storage of last 1000 alarm conditions, with date and time stamp
- Recipe storage for up to 1000 jobs
- Ethernet communication port for remote monitoring
- ADC Automatic Die Change (Optional RS232/422 Converter Module Required)
- Line Supervisor via wired or wireless (Optional RS232/422 Converter Module or Bluetooth module Required) \* Wireless is limited to up to 5 slide (presses) per line.



**Global Market Solutions**

Copyright © 2012 Helm Instrument Co., Inc. All Rights Reserved.

