

## Typ 52-02 Rubber Foot

100 kg ... 10 t



Rubber foot 52-02 and SB4 load cell

### Product Description

Flintec load cell supports are designed to prevent unwanted forces from affecting load cell performance.

The type 52-02 is a self aligning rubber foot, combining excellent load introduction with low profile design.

A special low profile foot is available.

The height is adjustable by shims.

Especially designed for the SB4, SB5, SLB, SB9 and SB14 load cells.

Material: steel, zinc plated; alternatively stainless steel.

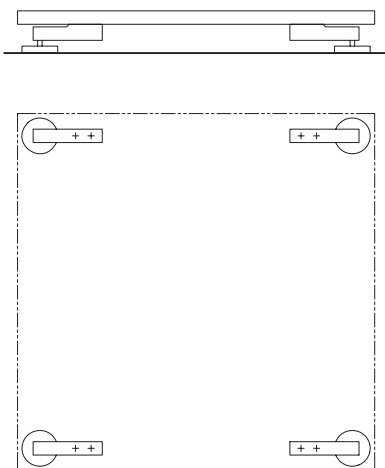
### Key Features

- Blind hole load introduction
- Capacity range: 100 kg to 10 000 kg
- Low profile
- Height adjustable with shims
- Very easy to install
- Especially designed for platform scales
- W&M certified
- A special low profile foot is available

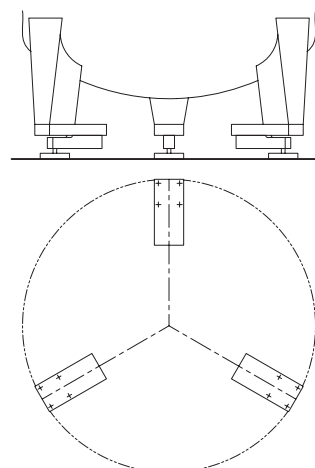
### Available Accessory

- Fixation plate

### Examples

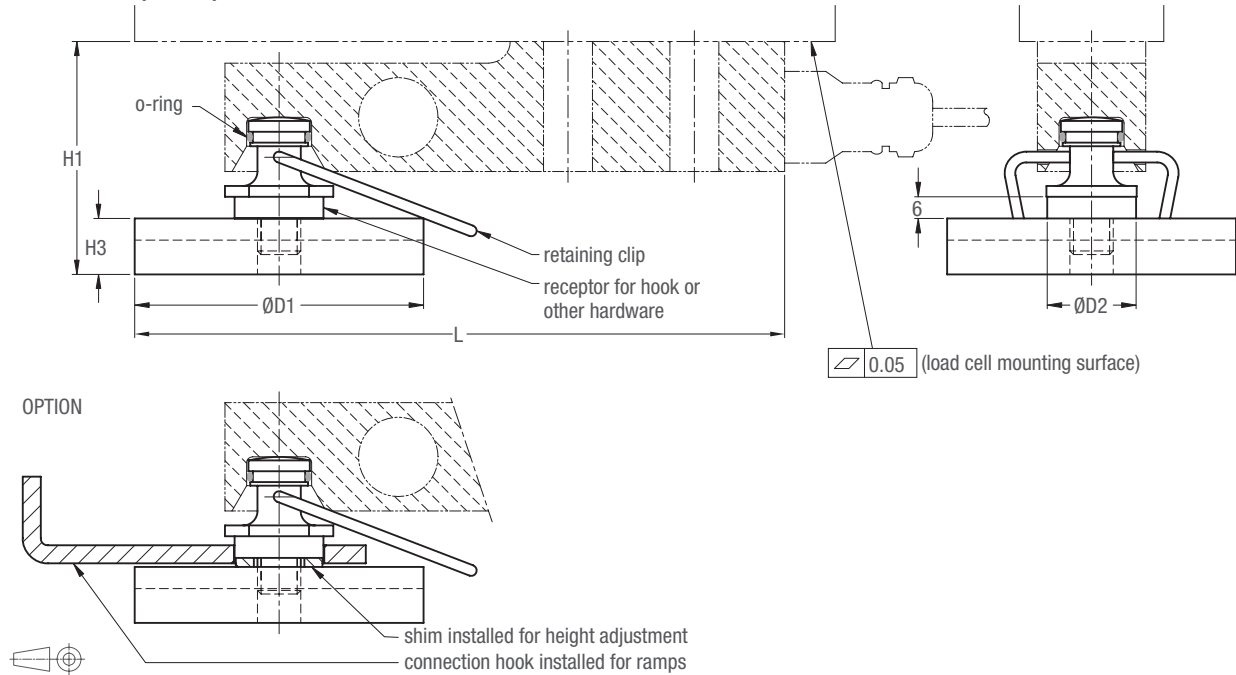


Platform scale with 4 load cells



Tank weighing system with 3 load cells  
(recommended base plate 52-00 included)

### Dimensions (in mm)



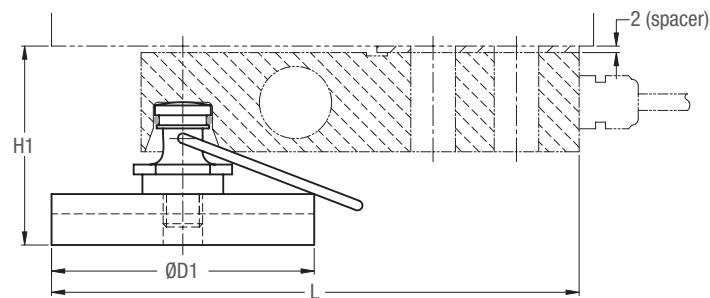
Load Cell Type	Capacity	D1	D2	L	H1	H2	H3
SLB / SB9	200...500 lb (91...227 kg) / 250 kg	60	24.5	154	61*	54*	16
	1...5 klb (454...2268 kg) / 500...2000 kg	80		164			
SB14	500 lb (227 kg)	60		154	60 / 62*	53 / 55*	
	1...5 klb (454...2268 kg)	80		164			
	10 klb (4536 kg)	100	34.5	209	85	68	18
SB4 / SB5	5...20 kN (510...2039 kg)	80	24.5	180	65	58	16
	50 kN (5 099 kg)	100	34.5	219	90	73	18
	100 kN** (10 179 kg)	125	44	278	109	n.a.	26

\* Including spacer.

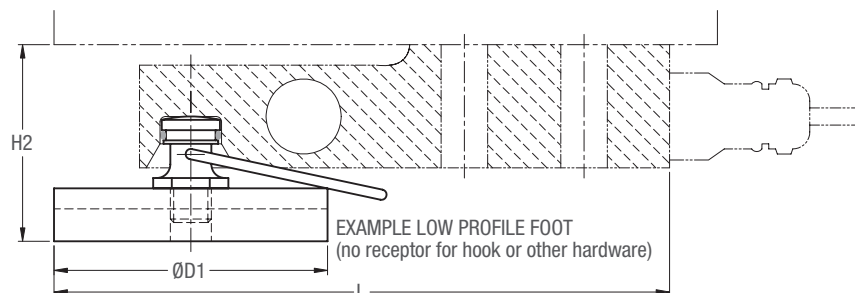
\*\* A special retaining clip is available.

CAD files for customer's own application drawings are available for download from the Flintec homepage.

### Details Type SLB Load Cell



### Low Profile Foot



20 kg ... 10 t



Rubber element with flange 52-05 and SB4 load cell combined with base plate 52-00

## Product Description

Flintec load cell supports are designed to prevent unwanted forces from affecting load cell performance.

The type 52-05 is a self aligning rubber element with flange, combining excellent load introduction with low profile design.

Especially designed for the SB4, SB5, SB6, SLB, SB9 and SB14 load cells.

Material: steel, zinc plated; alternatively stainless steel.

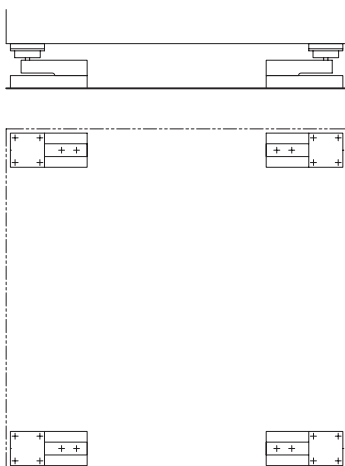
## Key Features

- Blind hole load introduction
- Capacity range: 20 kg to 10 000 kg
- Low profile
- High lateral compliance
- Very easy to install
- Especially designed for hopper, mixer and platform scales
- W&M certified

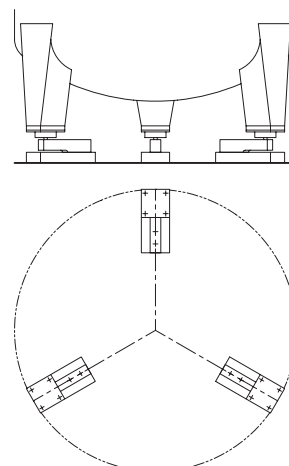
## Available Accessory

- Welding plate

## Examples

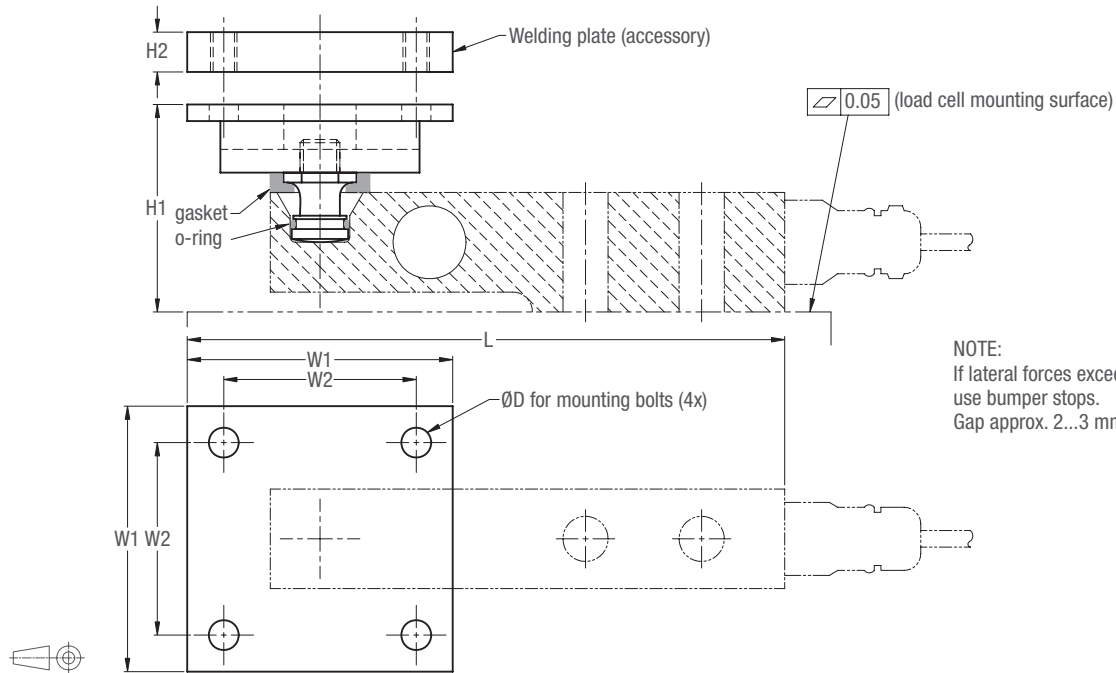


Platform or hopper scale with 4 load cells



Tank weighing system with 3 load cells

### Dimensions (in mm)



Load Cell Type	Capacity	L	H1	H2	W1	W2	Mounting bolts D	S <sub>max</sub> **	RF***
SB6	0.2...2 kN (20.4...204 kg)	150	65*	6	60	44	M6	6 mm	700 N
	500 lb (227 kg)	154	54						
SB14	1...5 klb (454...2268 kg)	164	60*	12	80	58	M8	5 mm	1.6 kN
	10 klb (4536 kg)	209	73						
SLB / SB9	200...500 lb (91...227 kg) / 250 kg	154	55*	6	60	44	M6	6 mm	700 N
	1...5 klb (454...2268 kg) / 500...2000 kg	164	59*						
SB4 / SB5	5...20 kN (510...2039 kg)	180	63	12	80	58	M8	5 mm	1.6 kN
	50 kN (5099 kg)	219	78						
	100 kN (10197 kg)	265	104	20	120	90	M12		5 kN
		275	108						

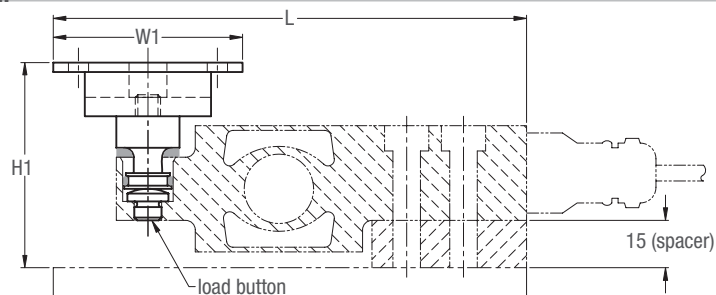
\* Including spacer.

\*\* S<sub>max</sub> = maximum lateral displacement of load introduction.

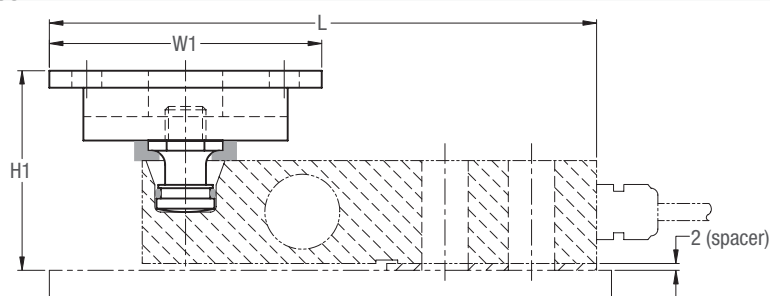
\*\*\* RF = restoring force at S<sub>max</sub>.

CAD files for customer's own application drawings are available for download from the Flintec homepage.

### Details Type SB6 Load Cell



### Details Type SLB Load Cell



## Type 52-10 Height Adjustable Rubber Foot

20 kg ... 2.5 t



Height adjustable rubber foot 52-10 and SB4 load cell

### Product Description

Flintec load cell supports are designed to prevent unwanted forces from affecting load cell performance.

The type 52-10 is an height adjustable, self aligning rubber foot; combining excellent load introduction with low profile design. Height adjustable by rotation of the foot.

Especially designed for the SB4, SB5, SB6, SLB, SB9 and SB14 load cells.

Material: steel, zinc plated; alternatively stainless steel.

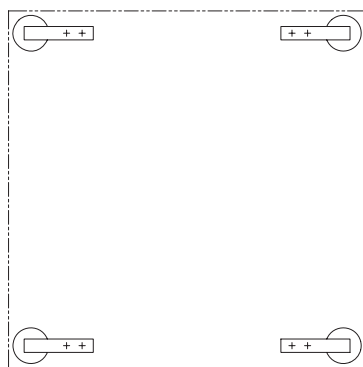
### Key Features

- Blind hole load introduction
- Capacity range: 20 kg to 2500 kg
- Low profile
- Height adjustable by rotation
- Very easy to install
- Especially designed for platform scales
- W&M certified

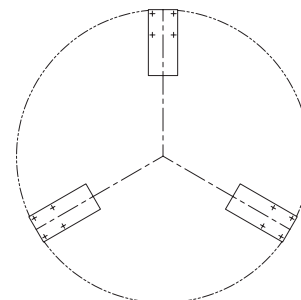
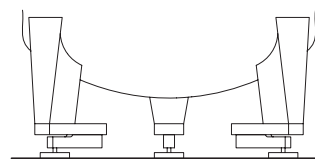
### Available Accessory

- Fixation plate

### Examples

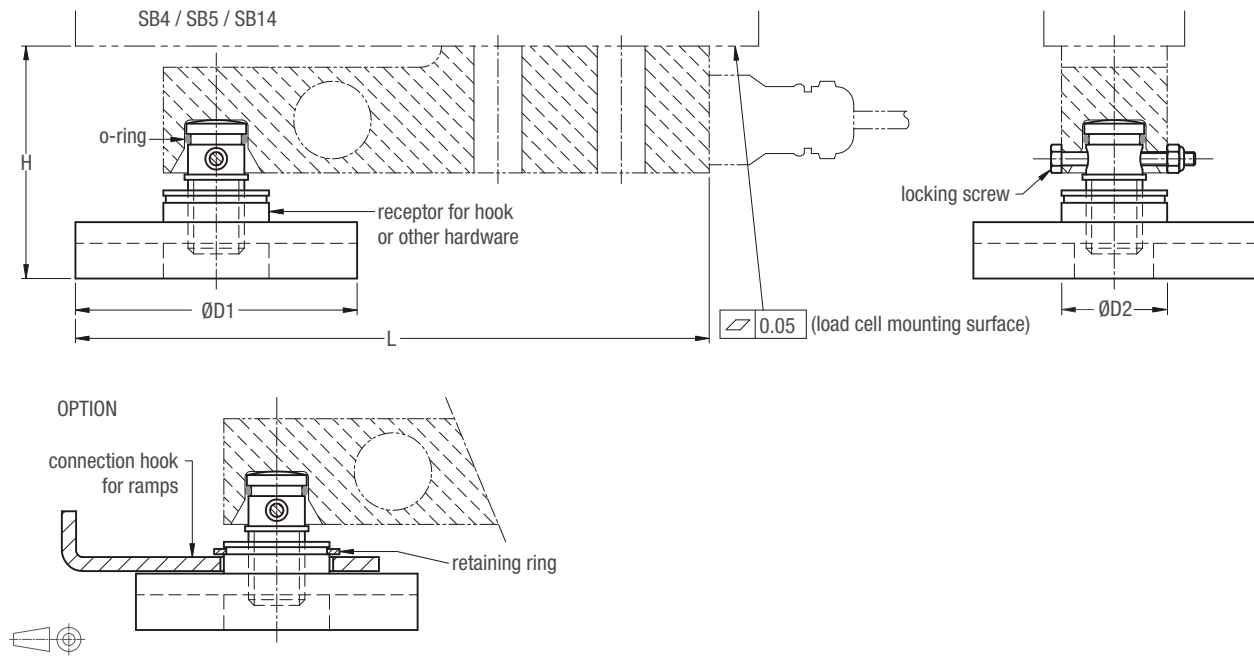


Platform scale with 4 load cells



Tank weighing system with 3 load cells  
(recommended base plate 52-00 included)

### Dimensions (in mm)

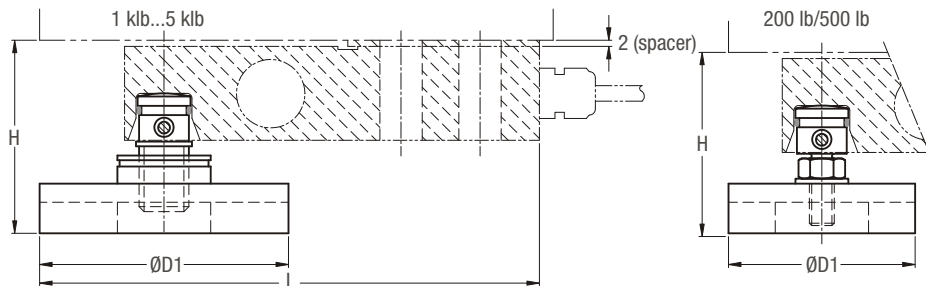


Load Cell Type	Capacity	D1	D2	L	H
SB6	200...500 N (20,4...204 kg)	60	-	150	65...71*
SLB / SB9	200...500 lb (91...227 kg) / 250 kg			154	57...63*
	1...5 klb (454...2268 kg) / 500...2000 kg			164	59...67*
SB14	0,5...5 klb (227...2268 kg)	80	30		58...66 / 60...68*
SB4 / SB5	5...20 kN (510...2039 kg)			180	63...71

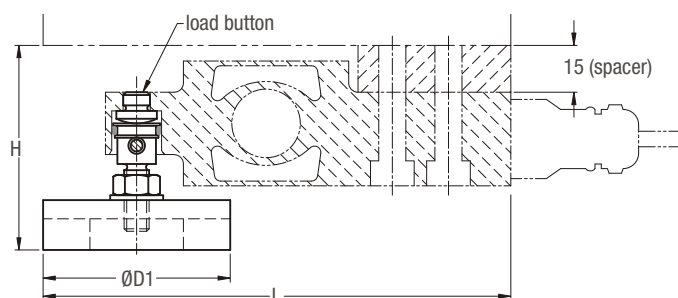
\* Including spacer.

CAD files for customer's own application drawings are available for download from the Flintec homepage.

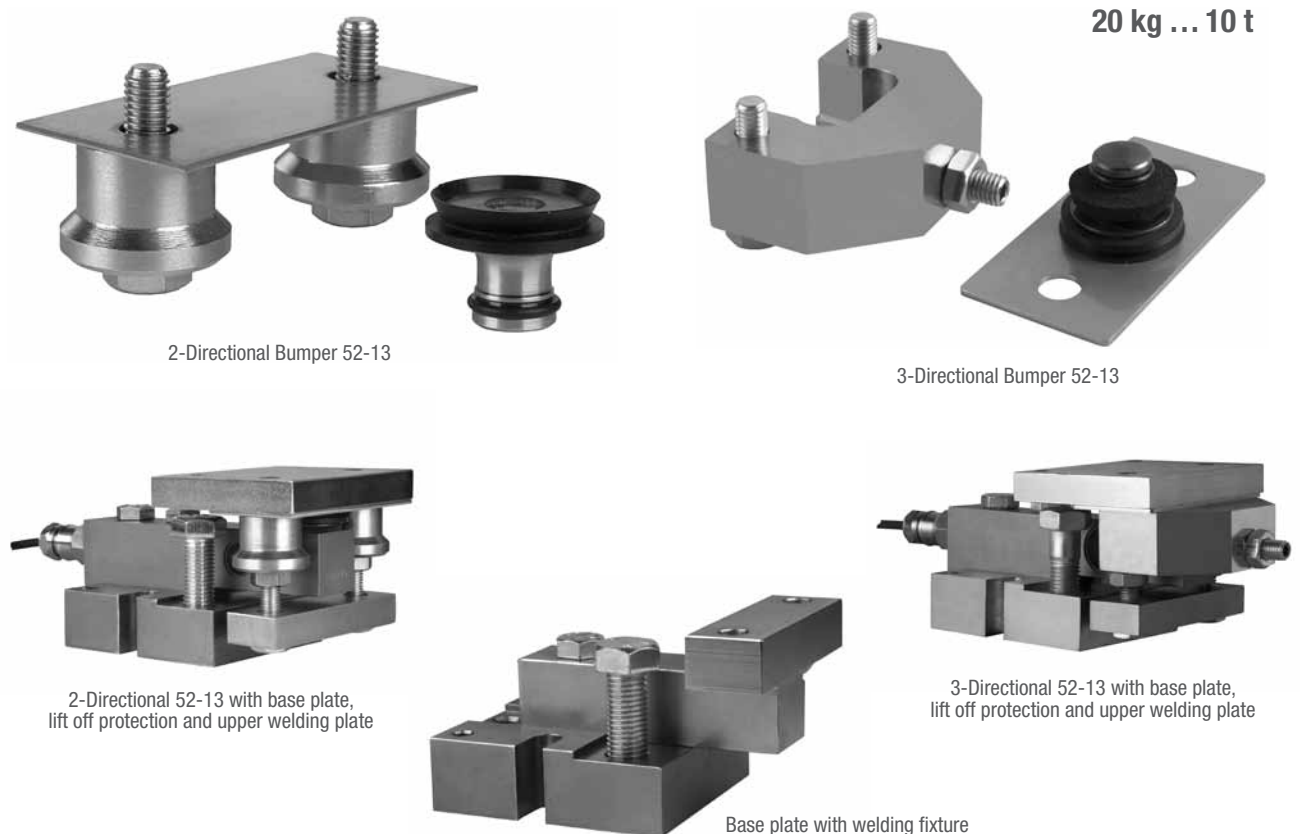
### Details Type SLB Load Cell



### Details Type SB6 Load cell



## Type 52-13 Sliding System



### Product Description

Flintec load cell supports are designed to prevent unwanted forces from affecting load cell performance.

The type 52-13 is a sliding system designed for hopper, tank and mixer weighing; combining excellent load introduction with low profile design and low cost for the basic system.

The system is available in 2 versions:

2-directional bumper for standard applications,

3-directional bumper for special applications.

Both variants can be used with free sliding units.

In addition a variant "T" is available, which allows a tangential orientation.

The options and accessories like base plate, lift off protection, upper welding plate, and welding fixture make installation easy and contribute to a totally very versatile and rugged design.

Especially designed for SB4, SB5, SB6, SB14 and SLB load cells.

Material: steel, zinc plated; alternatively stainless steel.

### Key Features

- 2 Versions available: 2-directional and 3-directional bumper
- Blind hole load introduction
- Capacity range 20 kg to 10 000 kg
- Low profile
- Very easy to install
- No check links needed
- Installation by bolting or welding
- W&M certified for 3 000 intervals

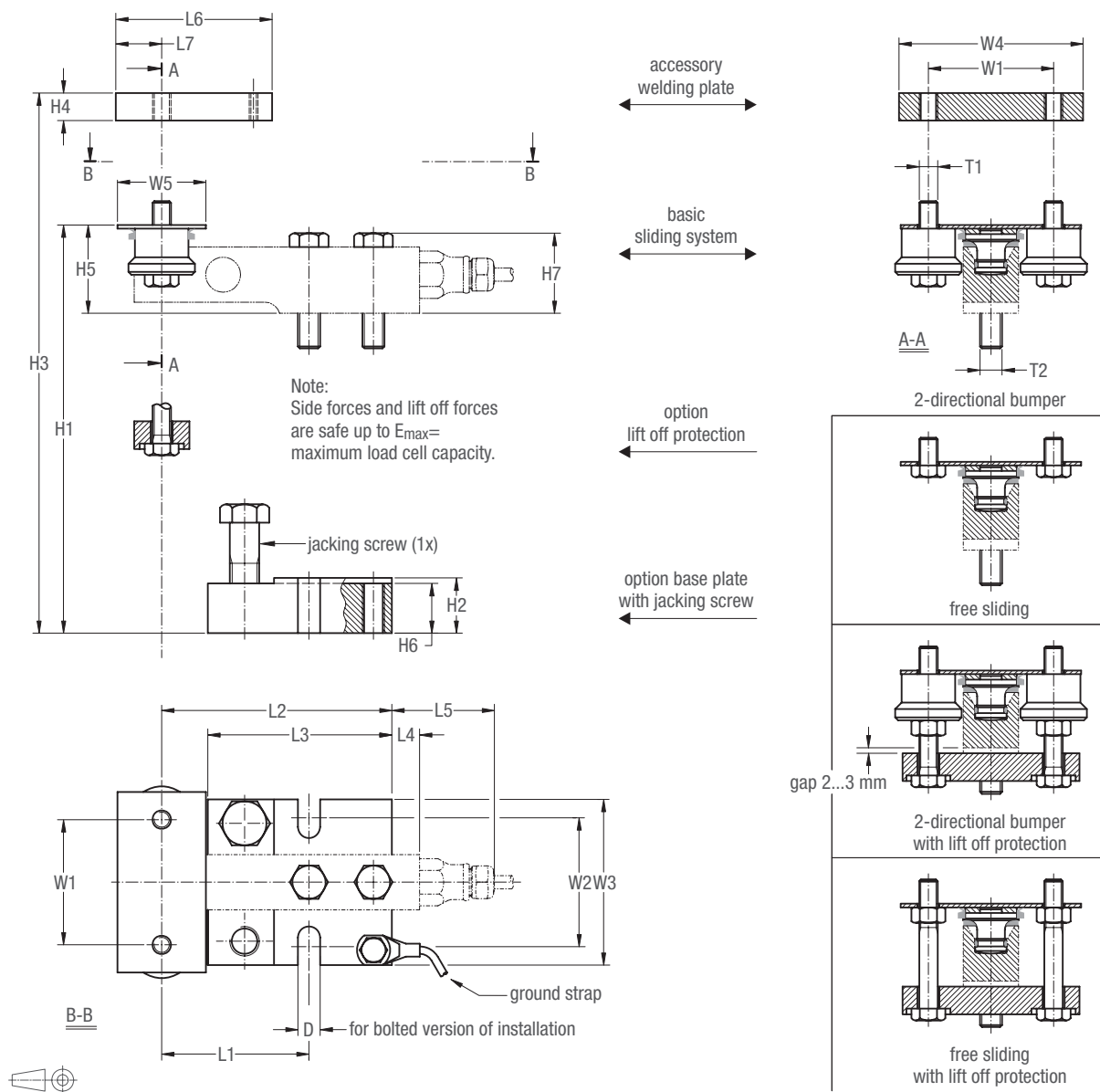
### Options

- Base plate, with jacking bolt
- Lift off protection

### Available Accessories

- Upper welding plate
- Welding fixture

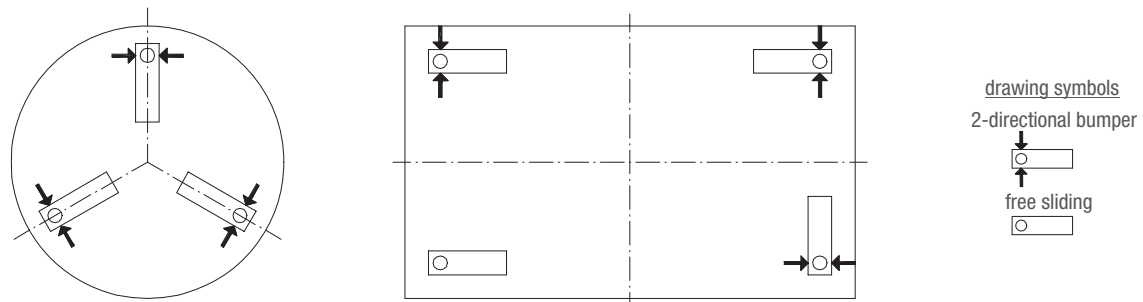
### 52-13 Dimensions 2-directional bumper and free sliding units (in mm)



Load cell type	H1	H2	H3	H4	H5	H6	H7	L1	L2	L3	L4	L5	L6	L7	W1	W2	W3	W4	W5	D	T1	T2
SB4/SB5-5/10/20 kN	75	30	90	15	48	27	44	80	125	100	15	56	85	25	68	70	90	100	48	13	M10	M12
SB4/SB5-50 kN	110	50	130	20	65	45	62	105	160	130	9	50	110	30	94	100	120	140	58	16	M16	M20
SB4/SB5-100 kN	135	50	160	25	90	45	88	135	205	160	10	51	135	35	120	130	150	180	68	20	M20	M24
SB6-0.2/0.5/1/2 kN	78	40	90	12	42	36	30	55	115	95	5	46	70	20	54	60	80	80	38	8	M6	M8
SB14-0.5/1/2.5/5 kN	75	35	90	15	43	32	39	80	125	100	-	37	85	25	68	70	90	100	48	13	M10	M12
SLB-0.2/0.5/1/2.5/5 kN	74	35	89	15	42	32	38	80	125	100	-	17	85	25	68	70	90	100	48	13	M10	M12

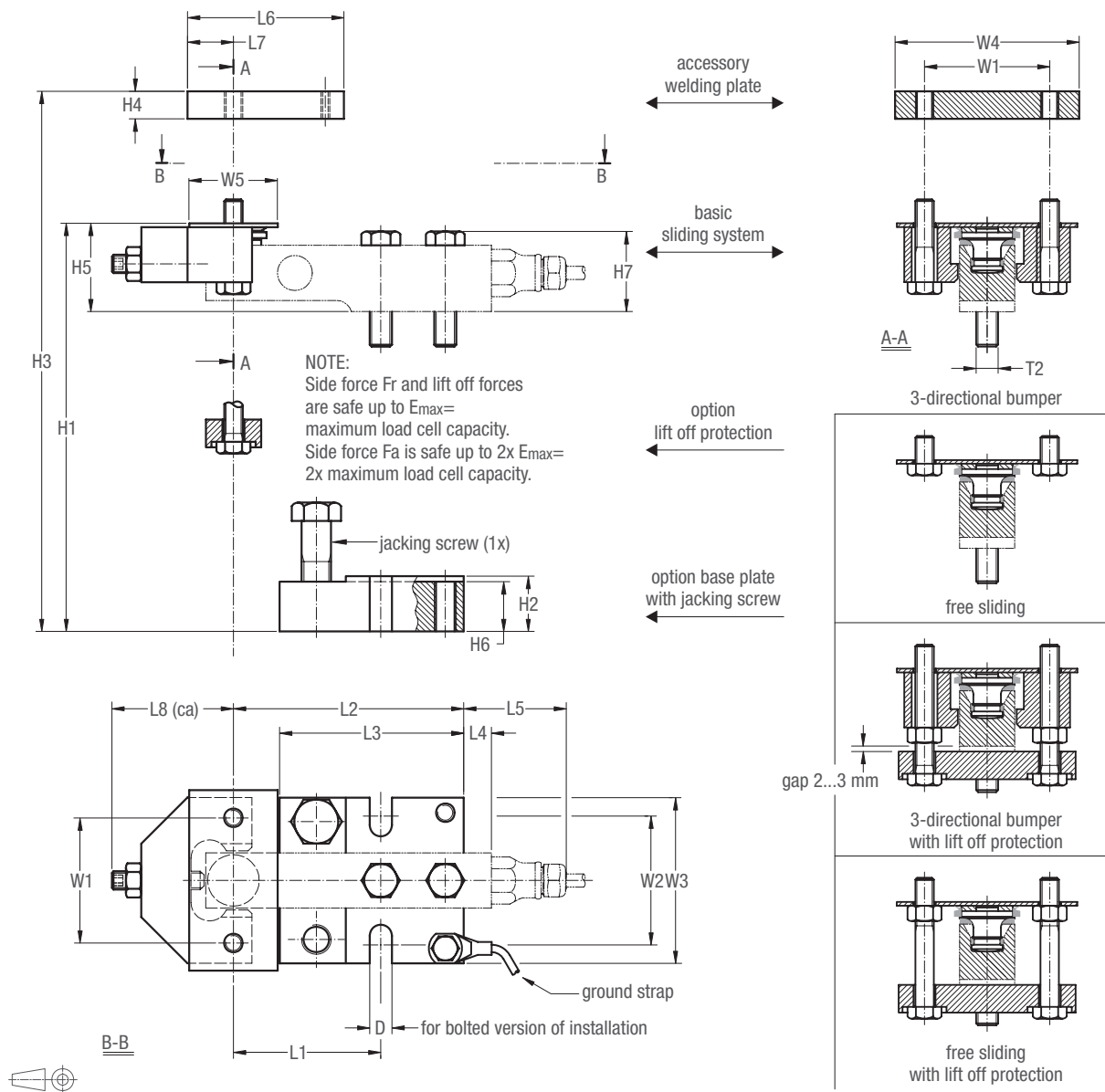
Assembly drawings with installation instructions and CAD files for customer's own application drawings are available on request.

### Orientation of 2-directional bumper and free sliding units



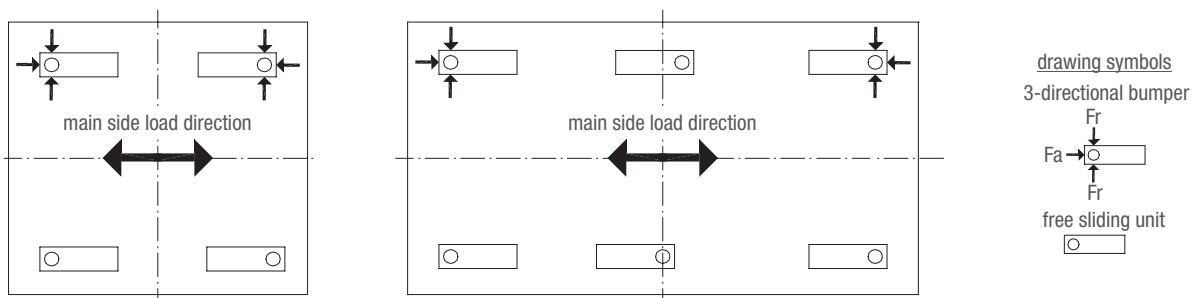


### 52-13 Dimensions 3-directional bumper and free sliding units (in mm)

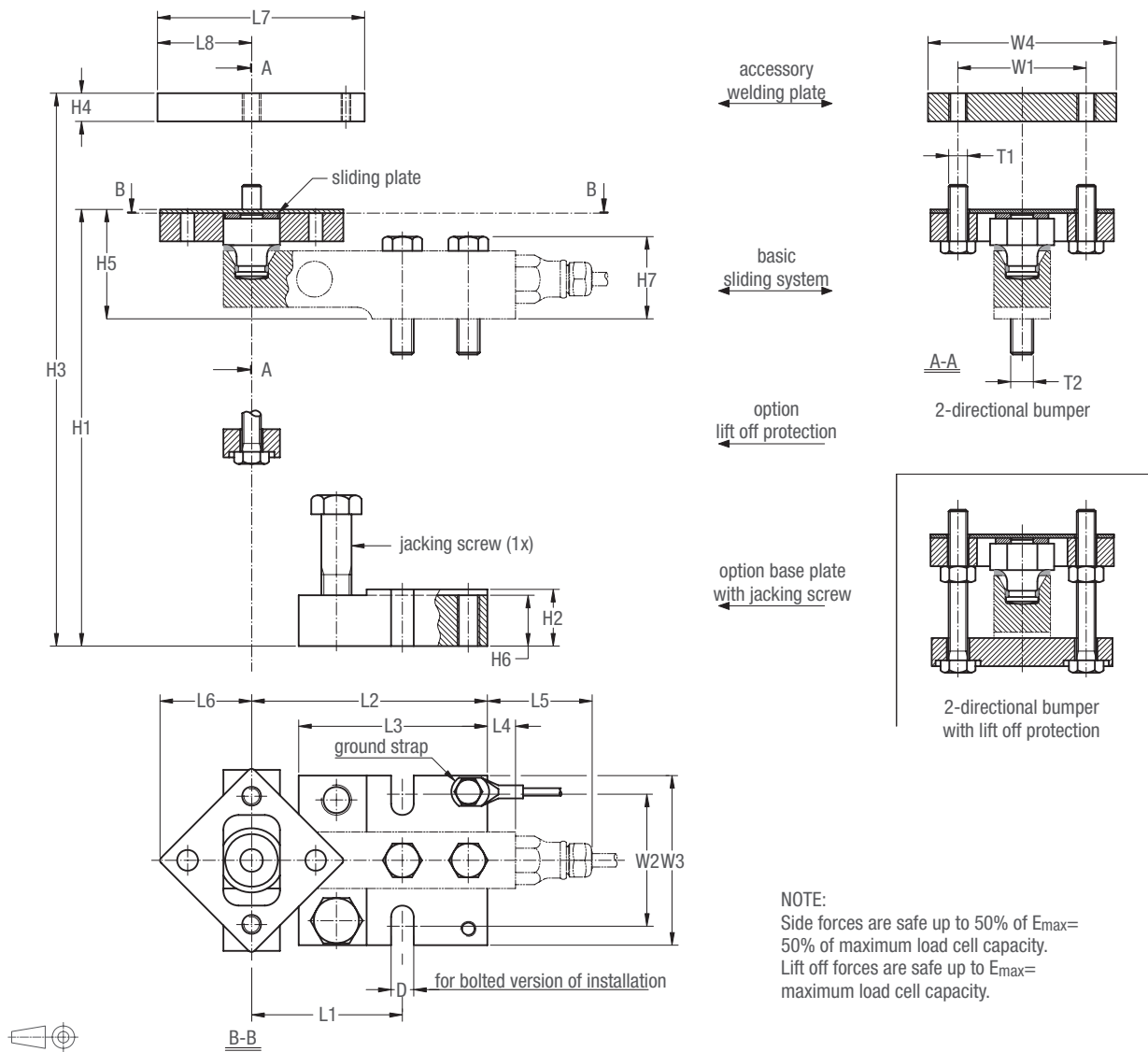


Load cell type	H1	H2	H3	H4	H5	H6	H7	L1	L2	L3	L4	L5	L6	L7	L8	W1	W2	W3	W4	W5	D	T1	T2
SB4/SB5-5/10/20 kN	75	30	90	15	48	27	44	80	125	100	15	56	85	25	67	68	70	90	100	48	13	M10	M12
SB4/SB5-50 kN	110	50	130	20	65	45	62	105	160	130	9	50	110	30	103	94	100	120	140	58	16	M16	M20
SB4/SB5-100 kN	135	50	160	25	90	45	88	135	205	160	10	51	135	35	132	120	130	150	180	68	20	M20	M24
SB6-0.2/0.5/1/2 kN	78	40	90	12	42	36	30	55	115	95	5	46	70	20	?	54	60	80	80	38	8	M6	M8
SB14-0.5/1/2.5/5 kN	75	35	90	15	43	32	39	80	125	100	-	37	85	25	65	68	70	90	100	48	13	M10	M12
SLB-0.2/0.5/1/2.5/5 kN	74	35	89	15	42	32	38	80	125	100	-	17	85	25	65	68	70	90	100	48	13	M10	M12

### Orientation of 3-directional bumper and free sliding units



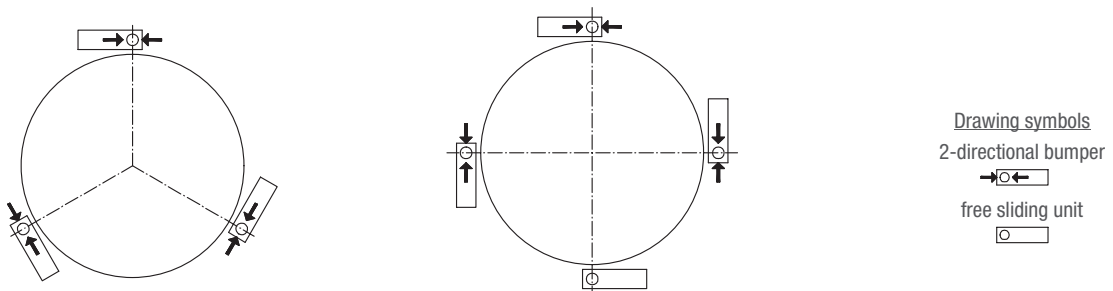
### Type 52-13T Sliding Systems (allows tangential mounting) Dimensions (in mm)



Load cee type	H1	H2	H3	H4	H5	H6	H7	L1	L2	L3	L4	L5	L6	L7	L8	W1	W2	W3	W4	D	T1	T2
SB4/SB5-5/10/20 kN	85	30	100	15	58	27	44	80	125	100	15	56	49	110	50	68	70	90	100	13	M10	M12
SB4/SB5-50 kN	125	50	150	25	80	45	62	105	160	130	9	50	75	150	75	94	100	120	150	16	M16	M20
SB4/SB5-100 kN	155	50	180	25	110	45	88	135	205	160	10	51	90	180	90	120	130	150	180	20	M20	M24
SB14-0.5/1/2.5/5 klb	85	35	100	15	53	32	39	80	125	100	-	37	49	110	50	68	70	90	100	13	M10	M12
SLB-0.2/0.5/1/2.5/5 klb	84	35	99	15	52	32	38	80	125	100	-	17	49	110	50	68	70	90	100	13	M10	M12

Remark: Not compatible with 52-13.

### Tanks with tangentially mounted load cells



## Type 52-15 Height Adjustable Rubber Foot

200 kg ... 2 t



Height adjustable rubber foot 52-15 and BK2 load cell

10 kg ... 500 kg



Height adjustable rubber foot 52-15 and SB8 load cell

### Product Description

Flintec load cell supports are designed to prevent unwanted forces from affecting load cell performance.

The Type 52-15 is an height adjustable, self aligning rubber foot; combining excellent load introduction with low profile design.

Especially designed for the BK2 (BK2-xxx kg-TM and BK2-xxx kg-TU) and type SB8 load cells.

Available in 3 versions:

- Metric version for BK2: Height adjustable by rotation of the foot
- Unified version for BK2: Height adjustable by rotation of pin from top
- Version for SB8: Threaded loading pin is secured by nuts

Material: stainless steel.

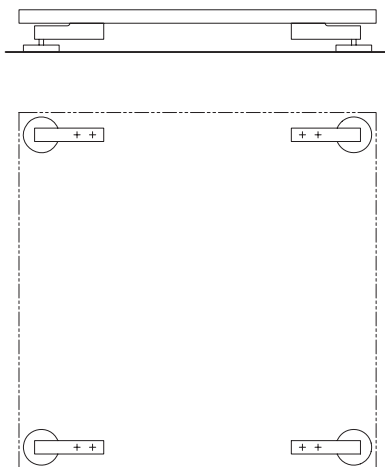
### Key Features

- Capacity range: 200 kg to 2000 kg for BK2 and 10 kg to 500 kg for SB8
- Low profile
- Available in 3 versions
- Very easy to install
- Especially designed for platform scales
- W&M certified

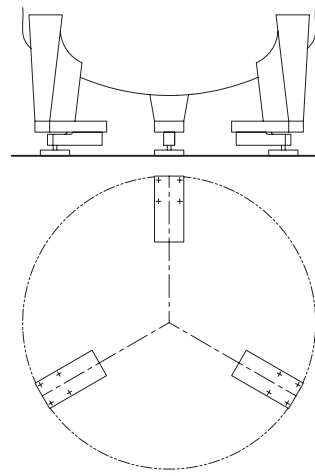
### Available Accessory

- Fixation plate

### Examples

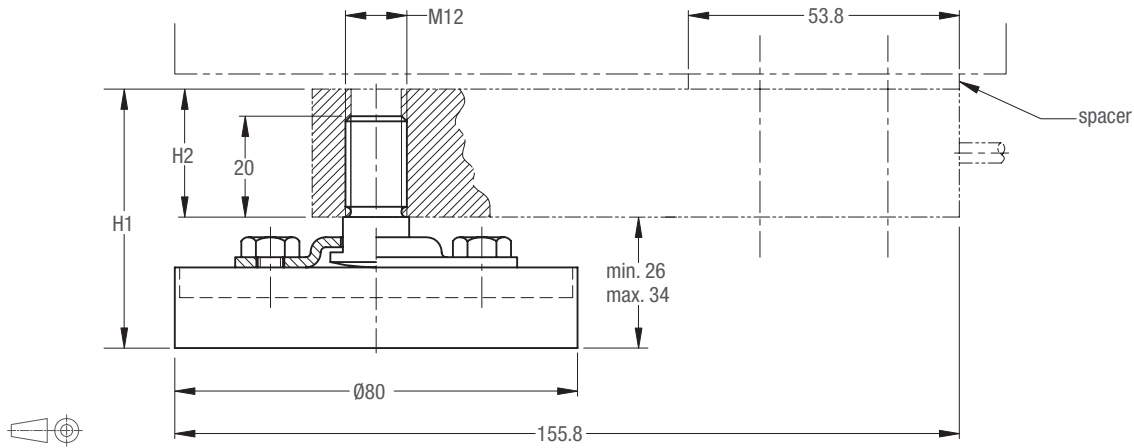


Platform scale with 4 load cells



Tank weighing system with 3 load cells  
(recommended base plate 52-00 included)

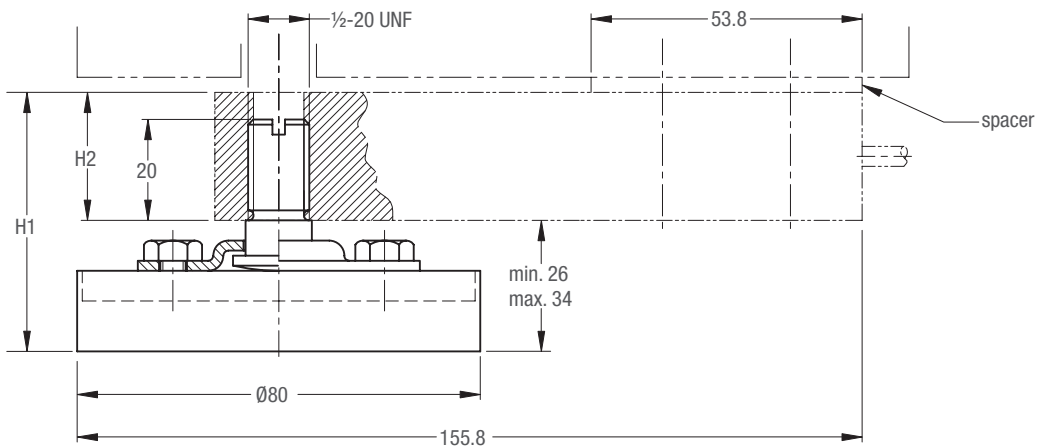
### Metric version for BK2 (dimensions in mm)



Load Cell	Total height H1	Load Cell height H2	*Extension above load cell	*Remark:
BK2-200 kg	38.7...46.7	12.7	0...7.3	The height of the BK2 load cell (H2) depends on its maximum capacity. The loading pin has a thread length of 20 mm.
BK2-500 kg	41.9...49.9	15.9	0...4.1	At the minimum total height (H1) the loading pin extends significantly above the load cell for the maximum capacities 200 and 500 kg.
BK2-1 000 kg	45.1...53.1	19.1	0...0.9	This value is calculated in the column "Extension above load cell"
BK2-2 000 kg	51.4...59.4	25.4	n.a.	The height of the spacer should be adapted accordingly.

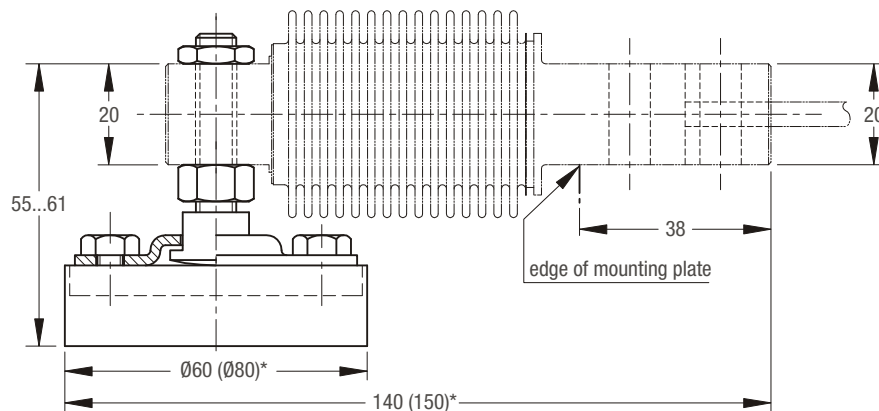
Height adjustable by rotation of the foot (BK2-xxx kg-TM).

### Unified version for BK2 (dimensions in mm)



Height adjustable by rotation of pin from top (BK2-xxx kg-TU).

### Version for SB8 (dimensions in mm)



\* Valid for SB8-500 kg.