

## Type 55-01-07A Rocker System



25 t ... 90 t

Rocker System 55-01-07A with RC1 Load Cell

### Product Description

Flintec load cell supports are designed to prevent unwanted forces from affecting load cell performance.

The type 55-01-07A is a self aligning rocker system, combining excellent load introduction with low profile design.

Especially designed for the RC1 load cells.

Material: steel, zinc plated.

A mounting fixture is available for easy and accurate positioning of foundation plates.

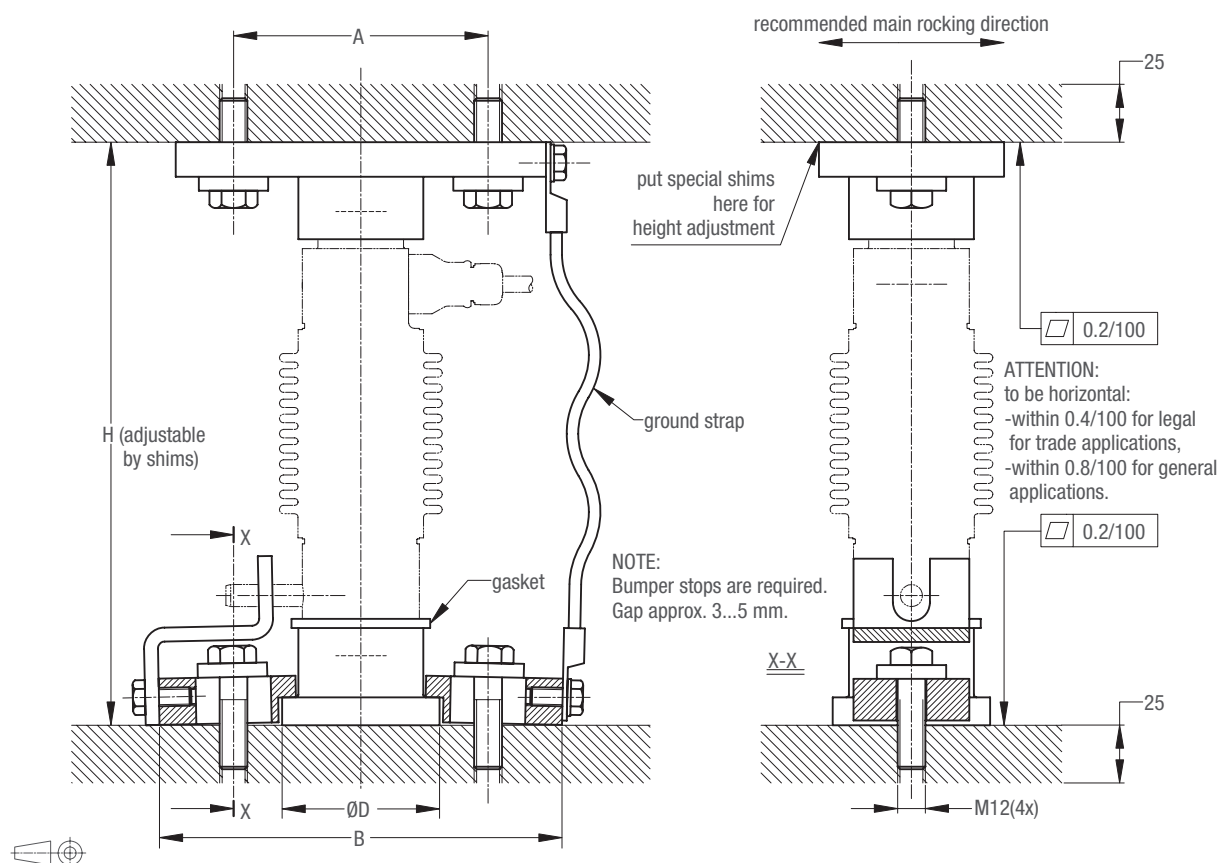
### Key Features

- Capacities 25 t, 40 t, 60 t and 90 t
- Low cost
- Very easy to install
- Especially designed for weighbridges
- W&M certified

### Available Accessories

- Mounting fixture
- Welding plate

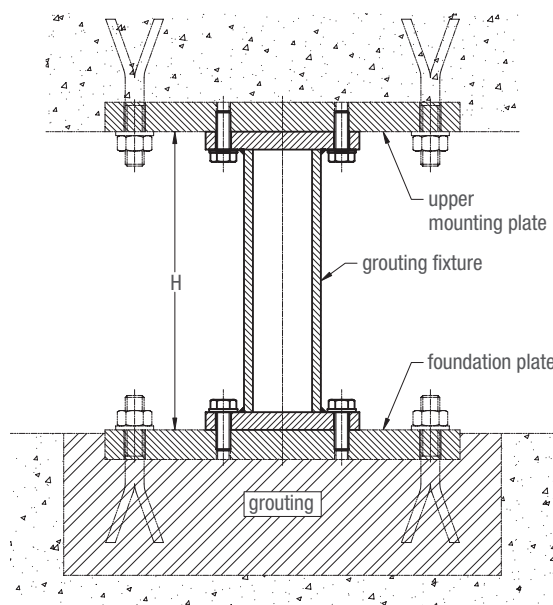
## Dimensions (in mm)



Load cell type	A	B	D	H
RC1-250 kN	110	176	68	252
RC1-400 kN				285
RC1-600 kN	130	196	88	300
RC1-900 kN				

CAD files for customer's own application drawings are available for download from the Flintec homepage.

## Accessories



The mounting fixture is used for easy and accurate positioning of the foundation plate.

30 t ... 50 t



Rocker System 55-01-07C with RC3 Load Cell

### Product Description

Flintec load cell supports are designed to prevent unwanted forces from affecting load cell performance.

The type 55-01-07C is a self aligning rocker system, combining excellent load introduction with low profile design.

Especially designed for the RC3/RC3D load cells.

Material: steel, zinc plated.

A mounting fixture is available for easy and accurate positioning of foundation plates.

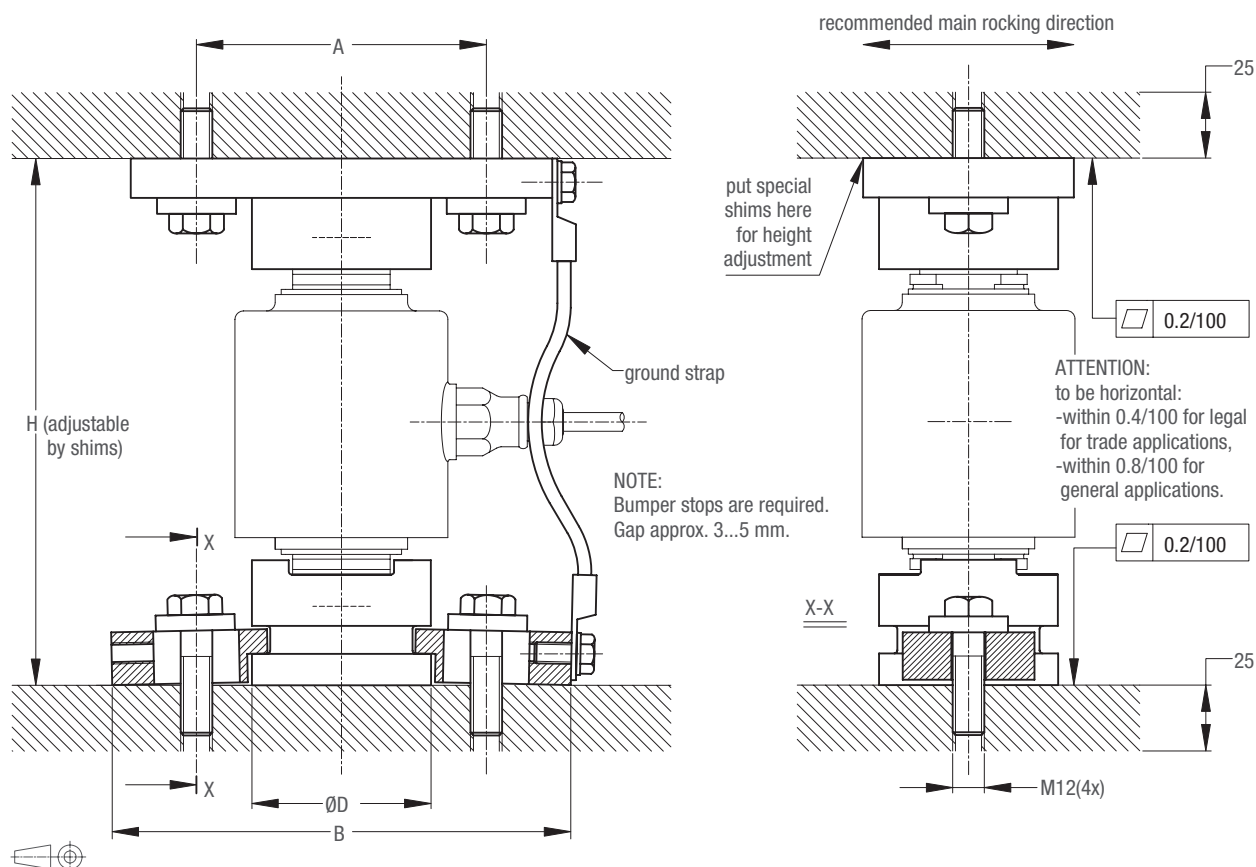
### Key Features

- Capacity 30 t, 40 t and 50 t
- Low cost
- Very easy to install
- Especially designed for weighbridges
- W&M certified

### Available Accessories

- Mounting fixture
- Welding plate

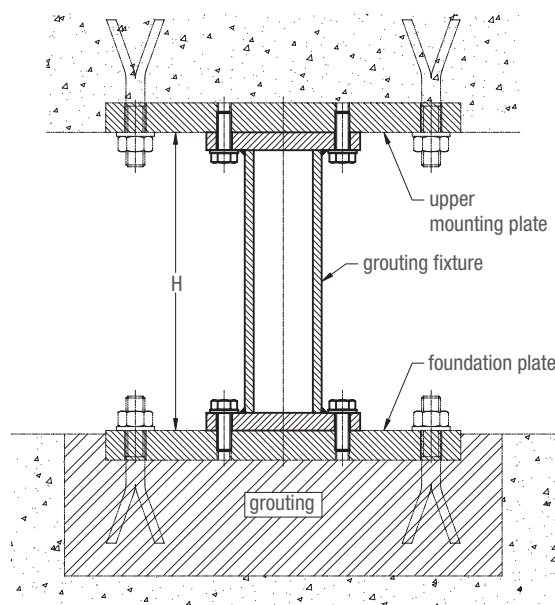
## Dimensions (in mm)



Load Cell Type	A	B	D	H
RC3-30 t	110	176	68	200
RC3-40 t / RC3D-30 t / RC3D-40 t				210
RC3-50 t / RC3D-50 t	130	196	88	240

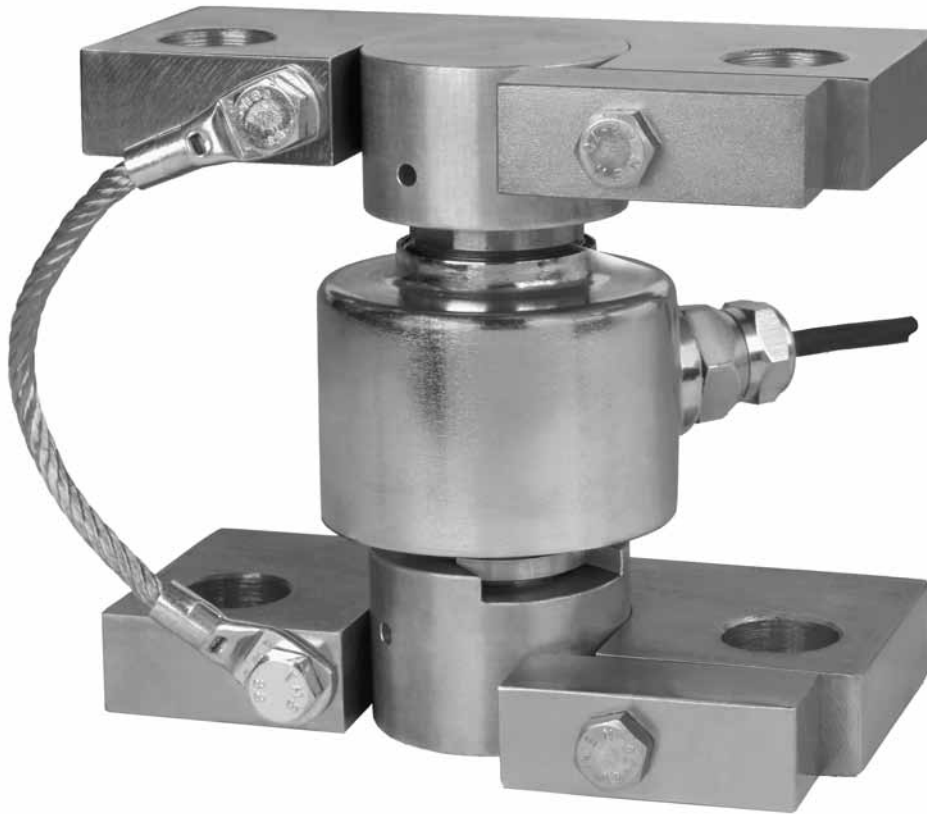
CAD files for customer's own application drawings are available for download from the Flintec homepage.

## Accessories



The mounting fixture is used for easy and accurate positioning of the foundation plate.

7.5 t ... 22.5 t



Rocker System 55-01-07D with RC3 Load Cell

### Product Description

Flintec load cell supports are designed to prevent unwanted forces from affecting load cell performance.

The type 55-01-07D is a self aligning rocker system, combining excellent load introduction with low profile design.

Especially designed for the RC3 load cells.

Material: steel, zinc plated.

An alignment fixture is available for accurate vertical alignment of the load cell.

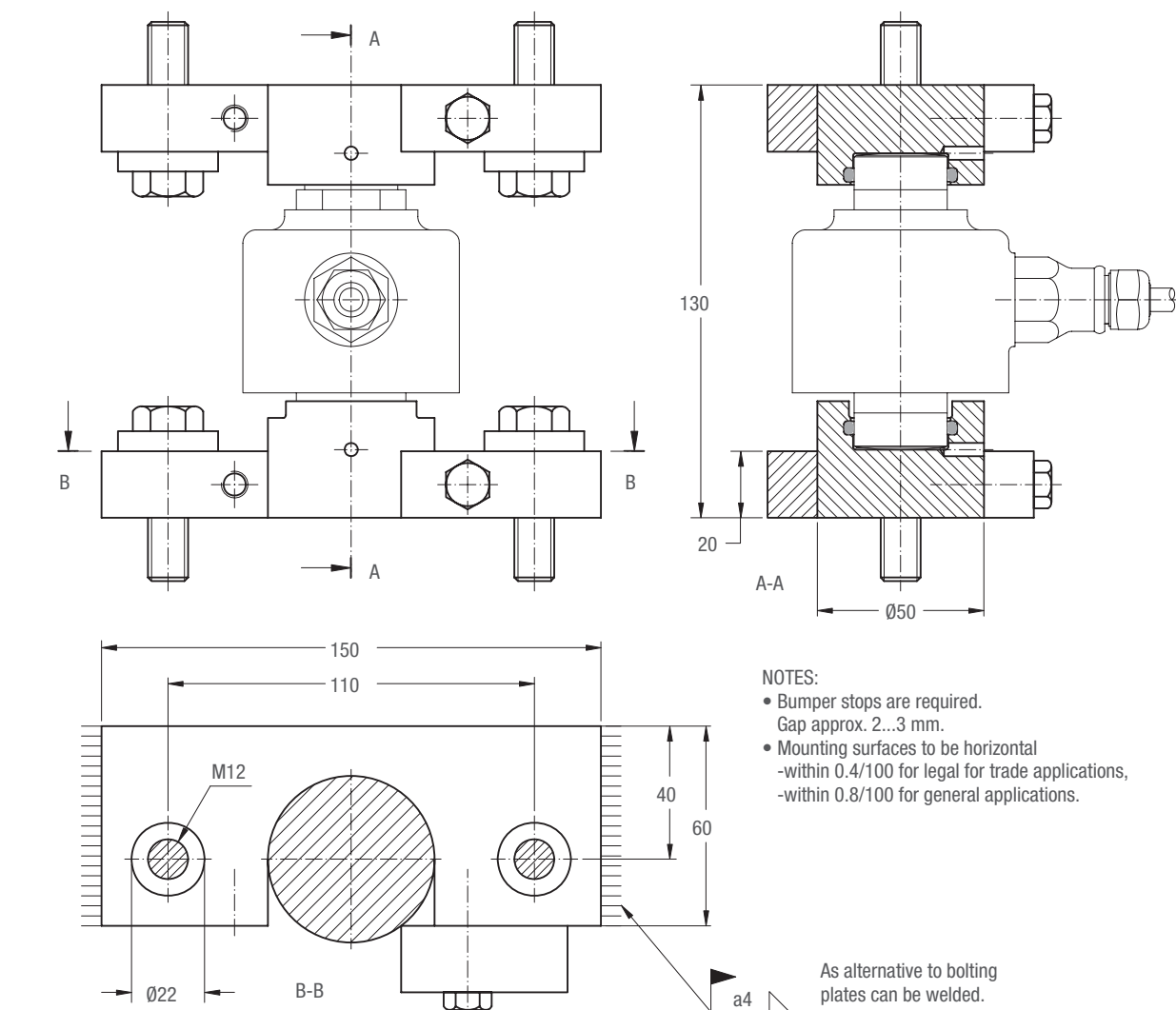
### Key Features

- Capacity 7.5 t, 15 t and 22.5 t
- Very low profile
- Low cost
- Very easy to install
- Especially designed for medium and high capacity platform scales
- W&M certified

### Available Accessories

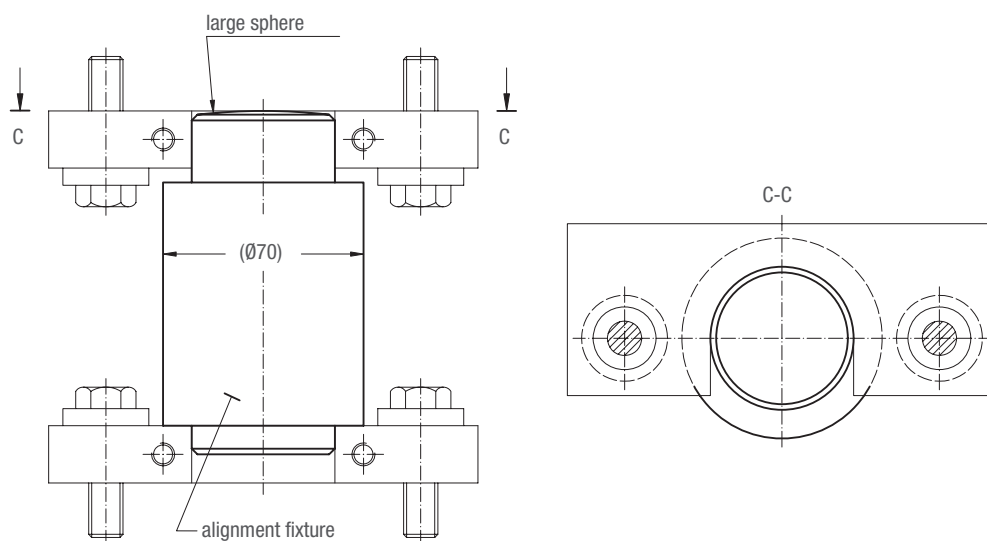
- Alignment fixture
- Welding plate

## Dimensions (in mm)



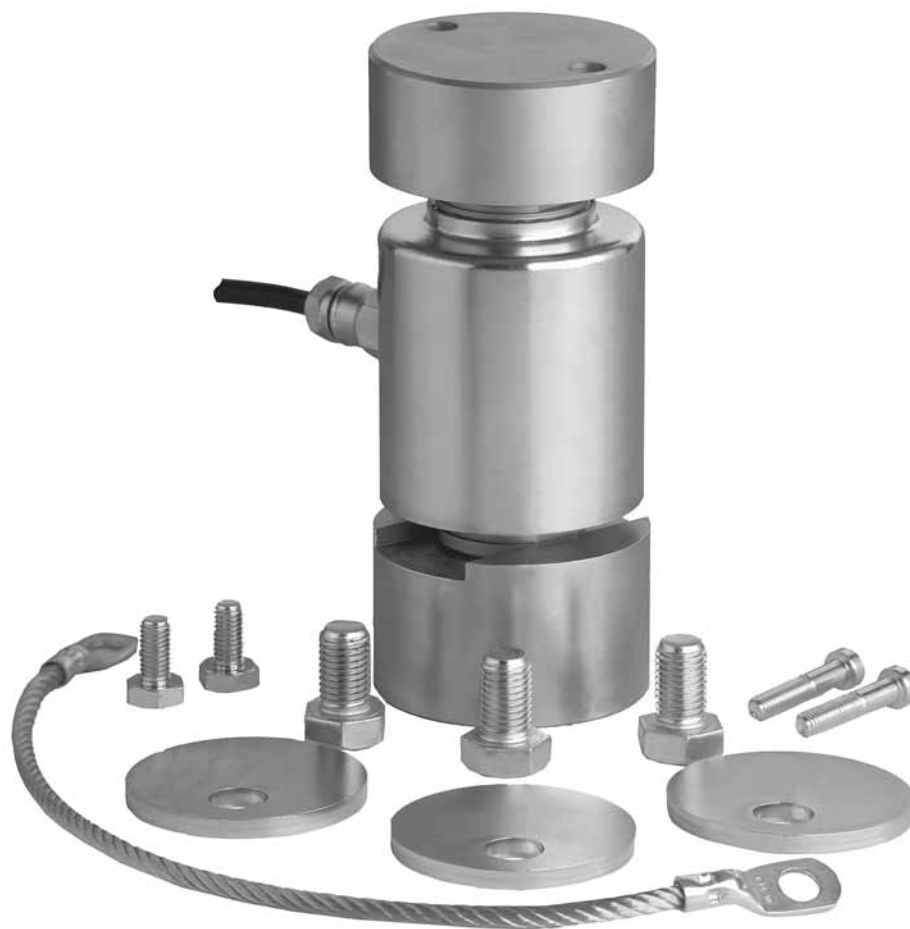
CAD files for customer's own application drawings are available for download from the Flintec homepage.

## Accessory



The alignment fixture is used for easy and accurate positioning.

30 t and 40 t



Rocker System 55-01-07H with RC3 Load Cell

### Product description

Flintec load cell supports are designed to prevent unwanted forces from affecting load cell performance.

The type 55-01-07H is a self aligning rocker system, combining excellent load introduction with low profile design.

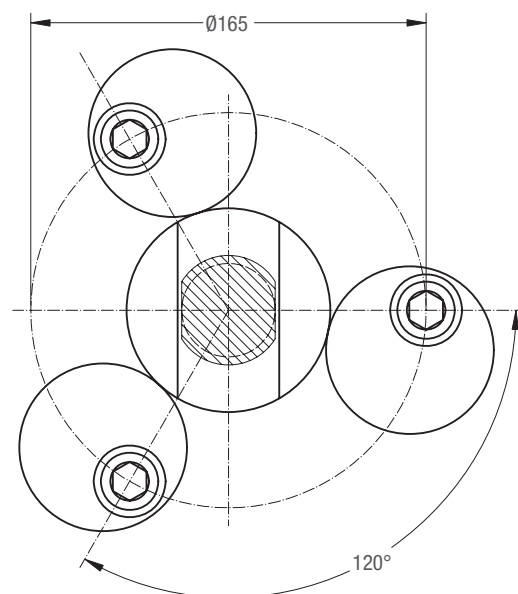
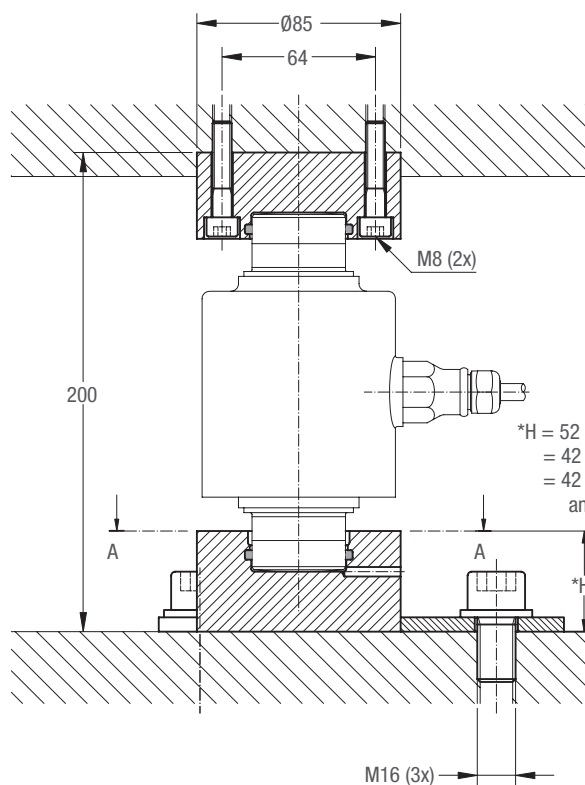
Especially designed for the RC3/RC3D load cells.

Material: steel, zinc plated.

### Key Features

- Capacity 30 t and 40 t
- Low cost
- Very easy to install
- Especially designed for weigh bridges
- W&M certified

# Dimensions (in mm)



## NOTES:

- Bumper stops are required.  
Gap approx. 3...5 mm.
- Mounting surfaces to be horizontal  
-within 0.4/100 for legal for trade applications,  
-within 0.8/100 for general applications.



CAD files for customer's own application drawings are available for download from the Flintec homepage.

**Remark:** Ground cable (L=350 mm) to be mounted with screws M10 x 20.



7.5 t ... 22.5 t



Weigh Module 55-01-10 with RC3 Load Cell



Pre-assembled module

### Product Description

Flintec load cell supports are designed to prevent unwanted forces from affecting load cell performance.

The type 55-01-10 is a self aligning weigh module, with excellent load introduction.

The module is especially designed for using Flintec rocker column load cells in hopper and tank weighing applications. The module incorporates an integrated bumper stop eliminating the need for check links thereby offering highest possible precision.

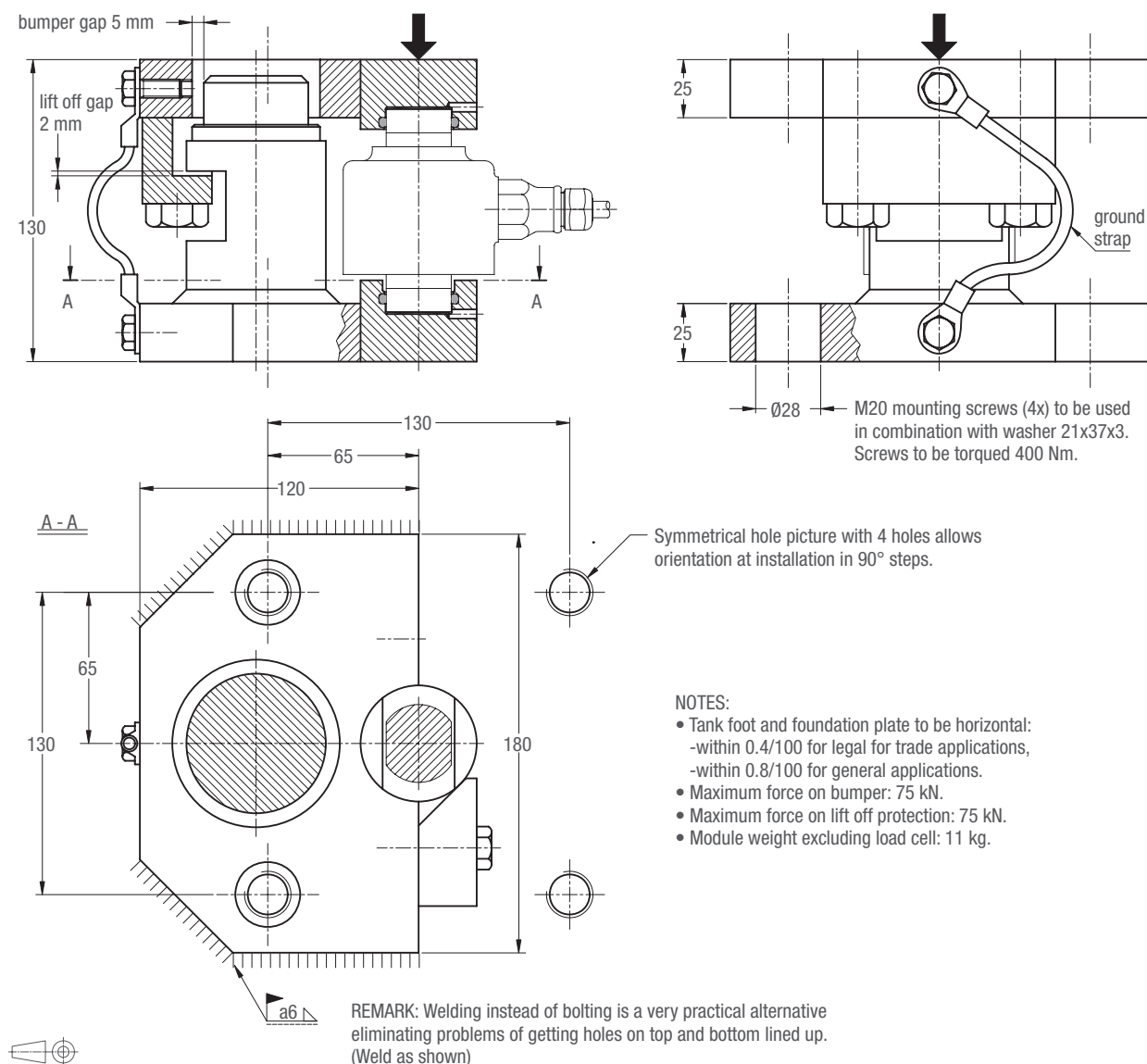
The Weigh Module will be shipped pre-assembled; ready for installation by bolting or welding.

Material: stainless steel.

### Key Features

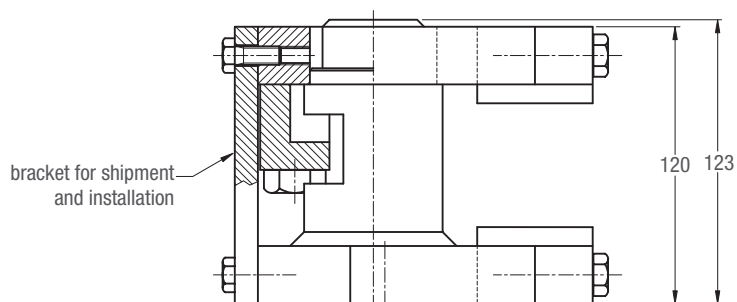
- Capacities 7.5 t, 15 t and 22.5 t
- Very easy to install
- Very rugged
- Especially designed for hopper and tank weighing
- Integrated bumper stop for highest accuracy
- Integrated lift off protection
- Load cell replacement requires minimum lifting height
- W&M certified

## Dimensions (in mm)

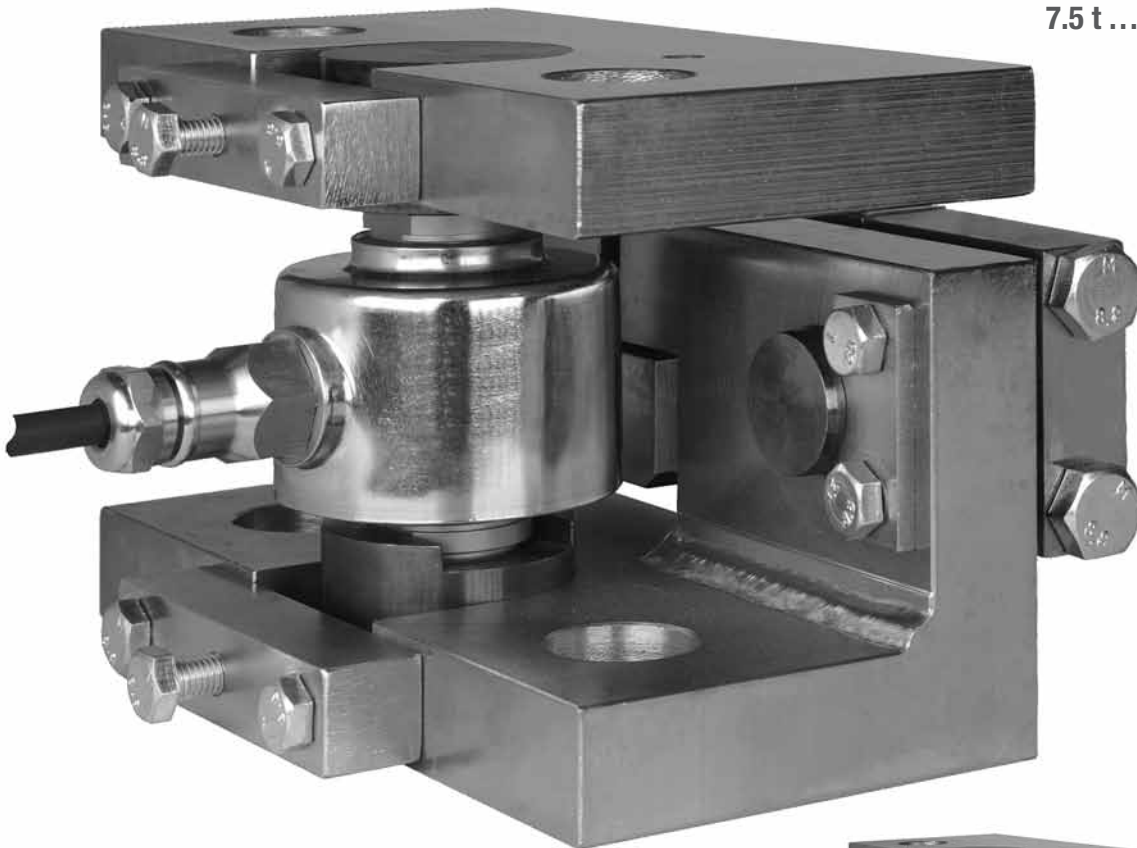


CAD files for customer's own application drawings are available for download from the Flintec homepage.

## Module assembled for shipment and installation



7.5 t ... 22.5 t



Weigh Module 55-01-11 with RC3 Load Cell



Pre-assembled module

### Product Description

Flintec load cell supports are designed to prevent unwanted forces from affecting load cell performance.

The type 55-01-11 is a self aligning weigh module, with excellent load introduction.

The module is especially designed for using Flintec rocker column load cells in hopper and tank weighing applications and incorporates an integrated check link to eliminate oscillations caused by slow moving agitators etc.

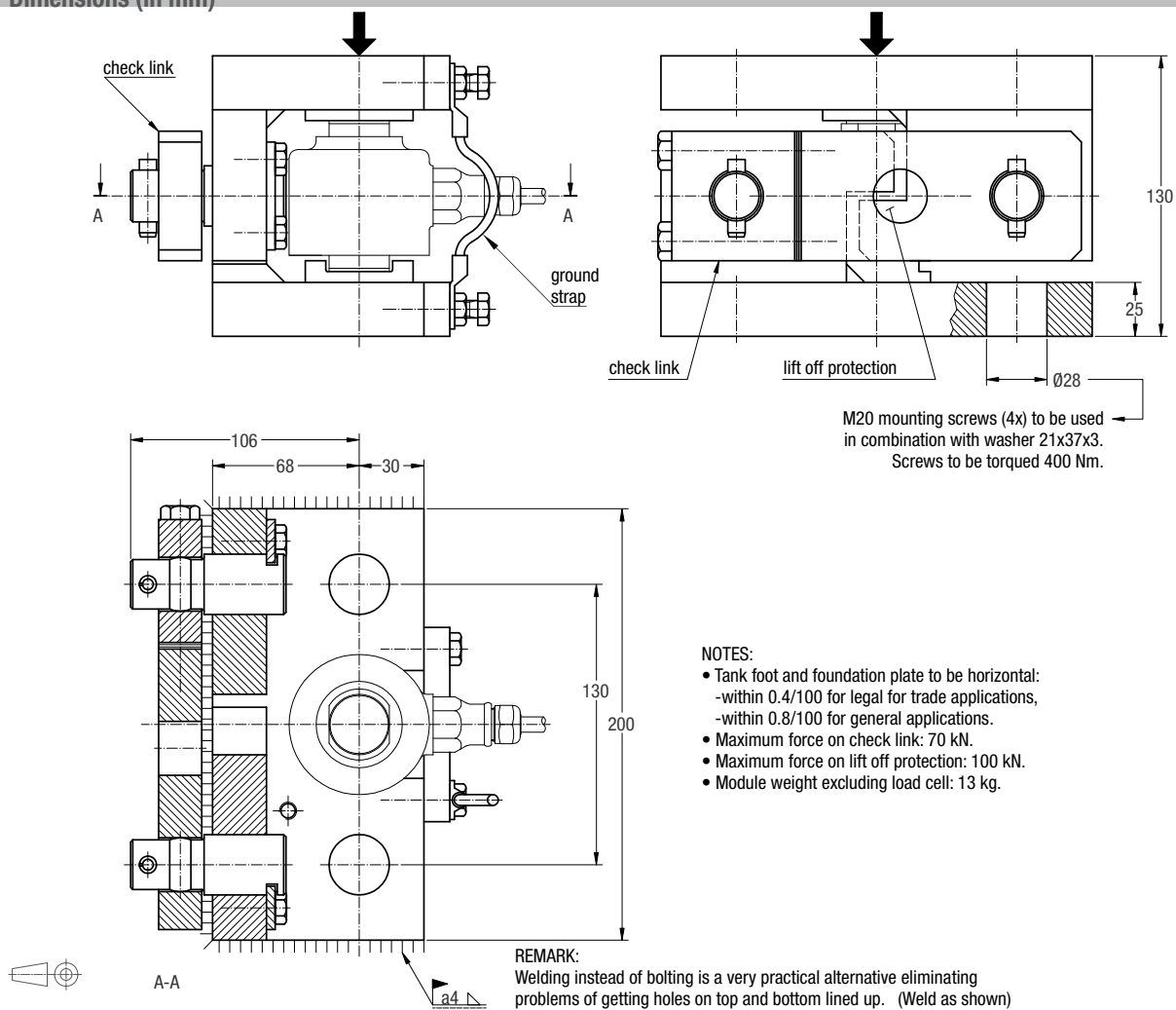
The Weigh Module will be shipped completely pre-assembled including a blocking plate; ready for installation by welding or bolting.

Material: steel, zinc plated; alternatively stainless steel.

### Key Features

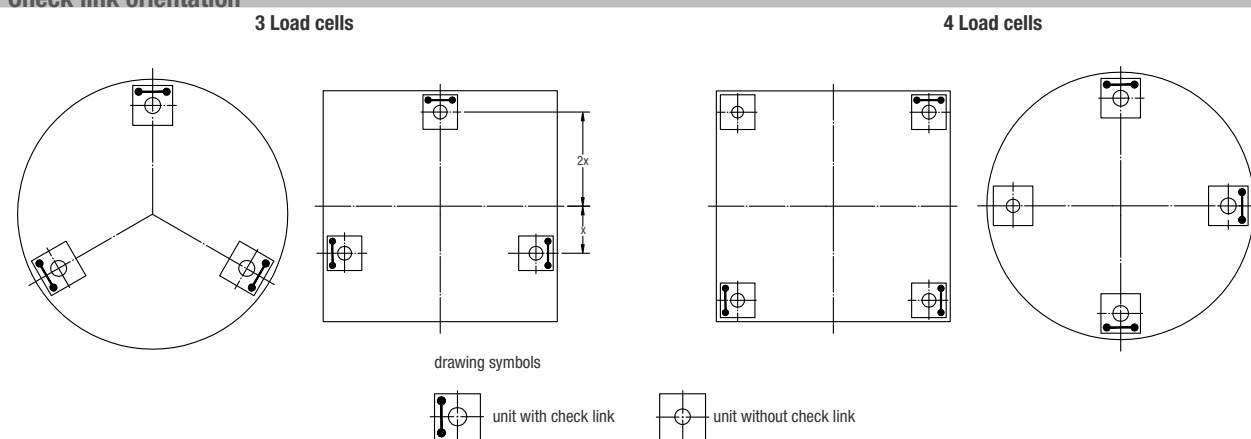
- Capacities 7.5 t, 15 t and 22.5 t
- Very easy to install
- Very rugged
- Especially designed for hopper and tank weighing with slow moving agitators
- With integrated lift off protection
- Load cell replacement requires minimum lifting height

## Dimensions (in mm)

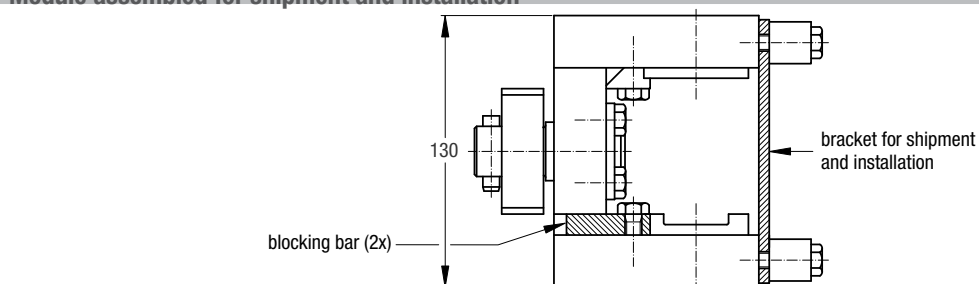


CAD files for customer's own application drawings are available for download from the Flintec homepage.

## Check link orientation



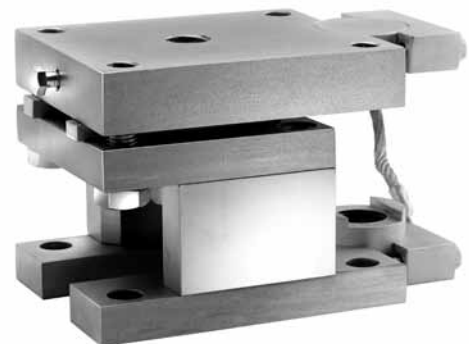
## Module assembled for shipment and installation



7.5 t ... 300 t



Weigh Module 55-20 with RC3 Load Cell



Pre-assembled module ready for installation

## Product Description

Flintec load cell supports are designed to prevent unwanted forces from affecting load cell performance.

The type 55-20 is a self aligning weigh module, with excellent load introduction.

The module is especially designed for using Flintec rocker column load cells in hopper and tank weighing applications. The module incorporates an integrated bumper stop eliminating the need of using check links thereby offering highest possible precision.

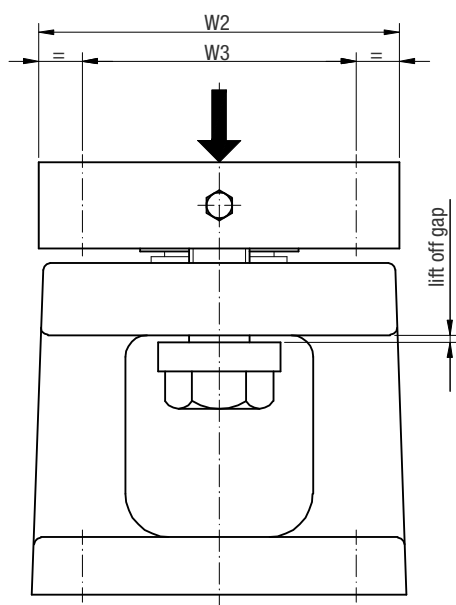
The Weigh Module will be shipped completely pre- assembled; ready for installation by welding or bolting.

Material: 7,5 t – 100 t mild steel, zinc plated  
150 t – 300 t cast mild steel, painted

## Key Features

- Capacities 7.5 t ... 300 t
- Very easy to install
- Especially designed for hopper and tank weighing
- With integrated bumper stop for highest precision
- With integrated lift off protection
- Load cell replacement requires minimum lifting height
- Rocking action of load cells allows for temperature expansion

## Dimensions (in mm)



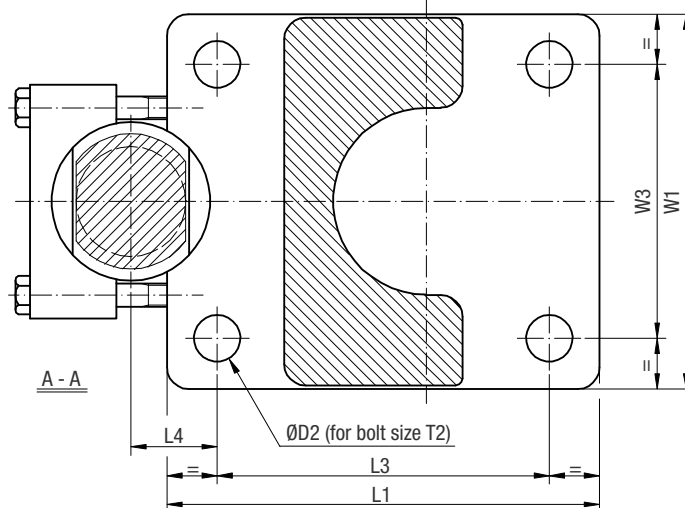
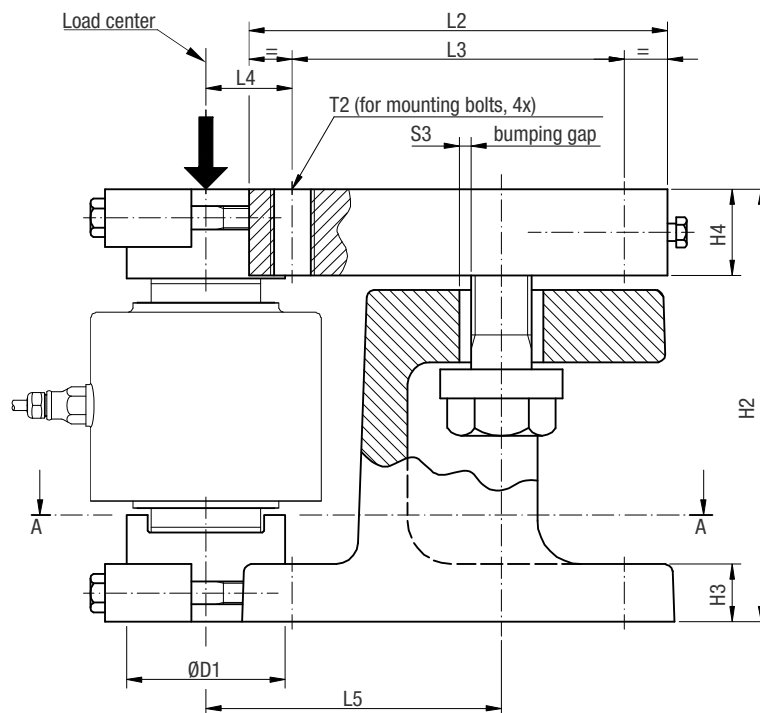
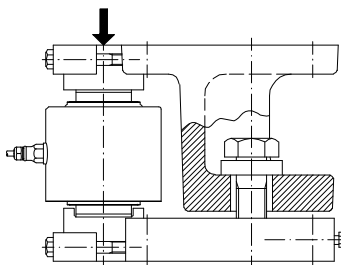
### GENERAL

The module can preferably be welded to tank foot and foundation plate. This eliminates problems of getting holes on top and bottom lined up. Or for example bolted on top and welded on bottom.

### ATTENTION:

- Mounting bolts are not included in delivery.
- Silo foot and foundation plate to be horizontal:
  - within 0.4/100 for legal for trade applications,
  - within 0.8/100 for general applications.

The weigh module can also be installed up side down as shown below in order to get through holes ØD2 on top.



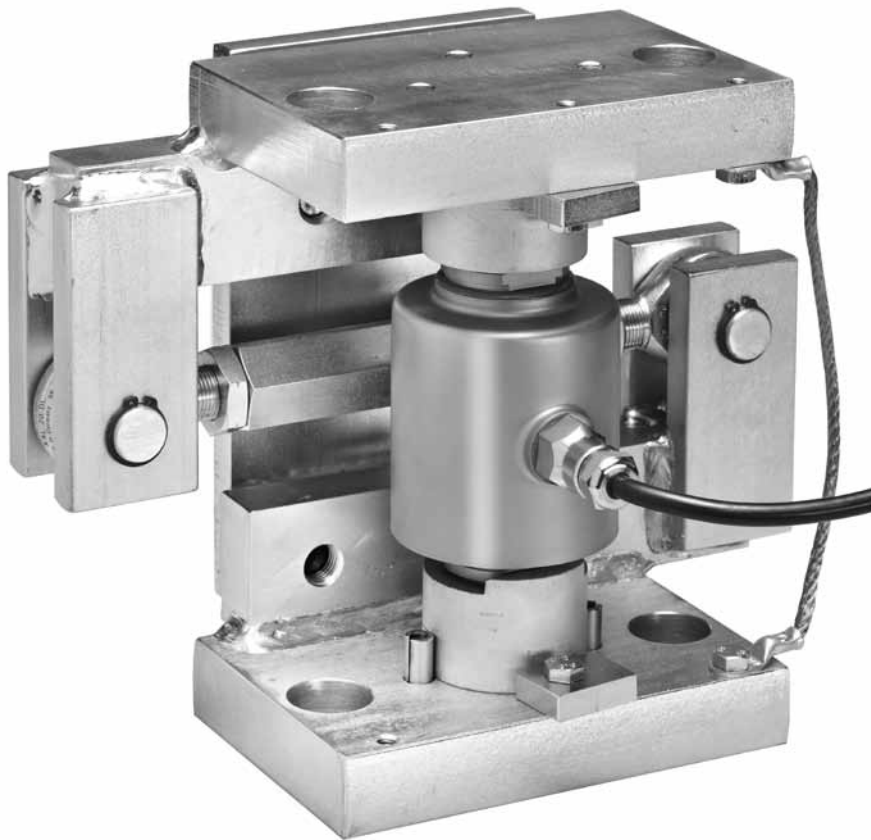
Load cell type	D1	D2	H2	H3	H4	L1	L2	L3	L4	L5	W1	W2	W3	S3	T2	Max lift off force (kN) *	Max side force (kN) *	Weigh excl load cell (kg)
RC3-7.5/15/22.5 t	50	17.5	130	20	30	166	160	130	25	100	136	130	100	5	M16	100	50	15
RC3-30/40 t	60	22	200	28	40	220	210	170	30	125	160	150	110	6	M20	180	90	33
RC3-50/100 t	85	26	250	34	50	260	250	200	45	165	210	200	150	7	M24	300	150	65
RC3-150 t	110	33	300	40	60	300	290	230	60	205	260	250	190	8	M30	400	200	113
RC3-300 t	135	39	400	60	70	370	350	280	65	235	320	300	230	10	M36	600	300	225

### \* Note

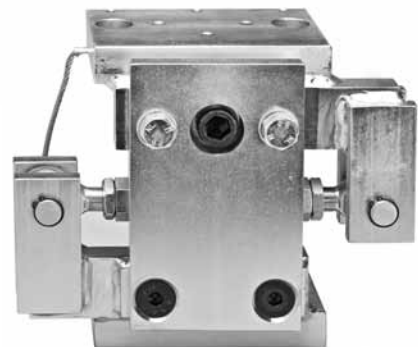
- In tank / silo applications with 3 respectively 4 weigh modules can be assumed that minimum 2 modules will equally share actual side force (wind) on the tank / silo.
- Actual lift off force shall, for worst case, be assumed being taken by one module.

CAD files for customer's own application drawings are available for download from the Flintec homepage.

30 t ... 40 t



Weigh Module 55-30 with RC3 Load Cell



Pre-assembled module

### Product Description

Flintec load cell supports are designed to prevent unwanted forces from affecting load cell performance.

The type 55-30 is a self aligning weigh module, with excellent load introduction.

The module is especially designed for using Flintec rocker column load cells in hopper and tank weighing applications and incorporates an integrated check link to eliminate oscillations caused by slow moving agitators etc.

The Weigh Module will be shipped completely pre-assembled including a transportation lock; ready for installation by welding or bolting.

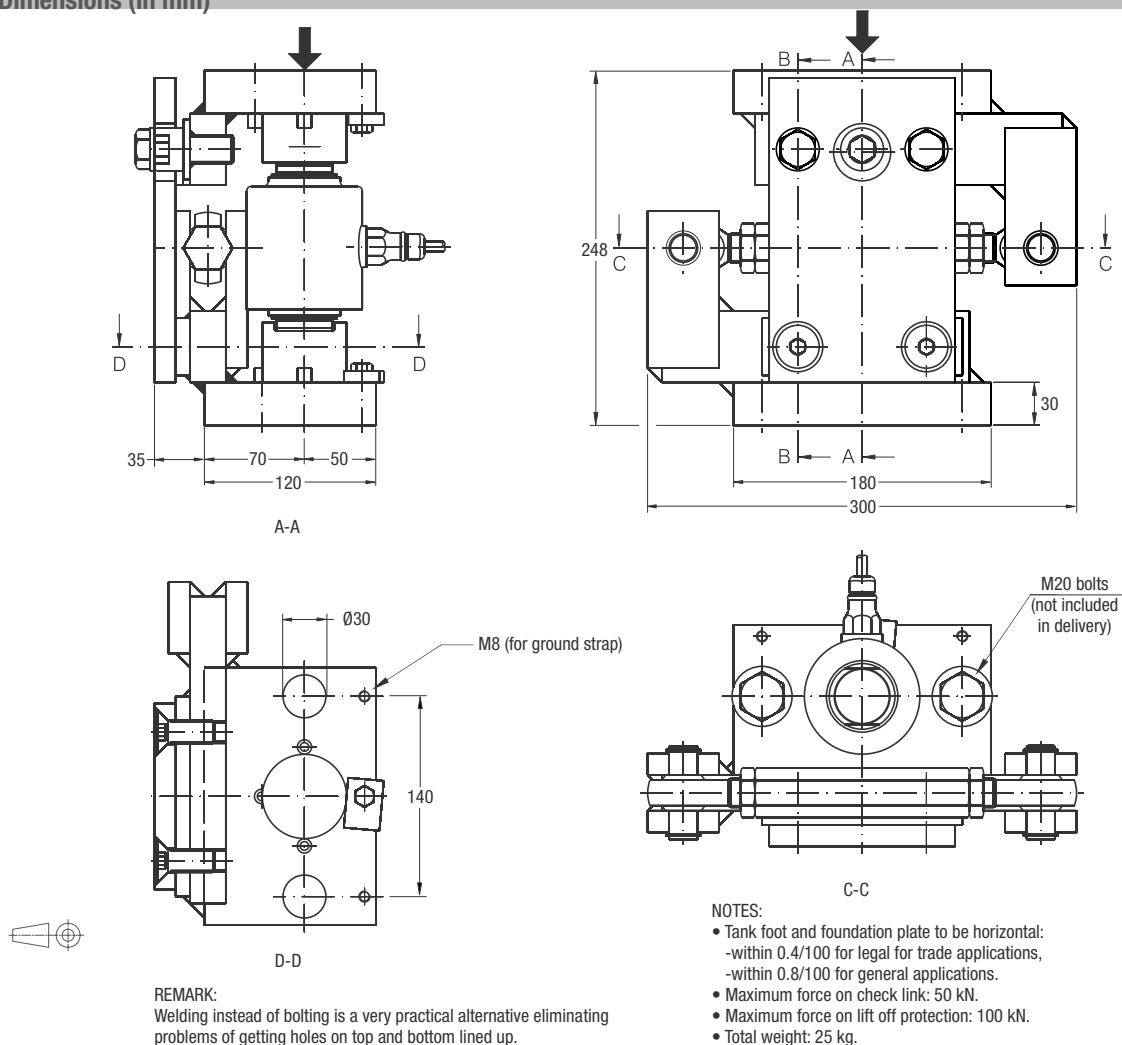
Material: steel, zinc plated; alternatively stainless steel

### Key Features

- Capacities 30 t and 40 t
- Very easy to install
- Very rugged
- Especially designed for hopper and tank weighing with slow moving agitators
- With integrated lift off protection
- Load cell replacement requires minimum lifting height

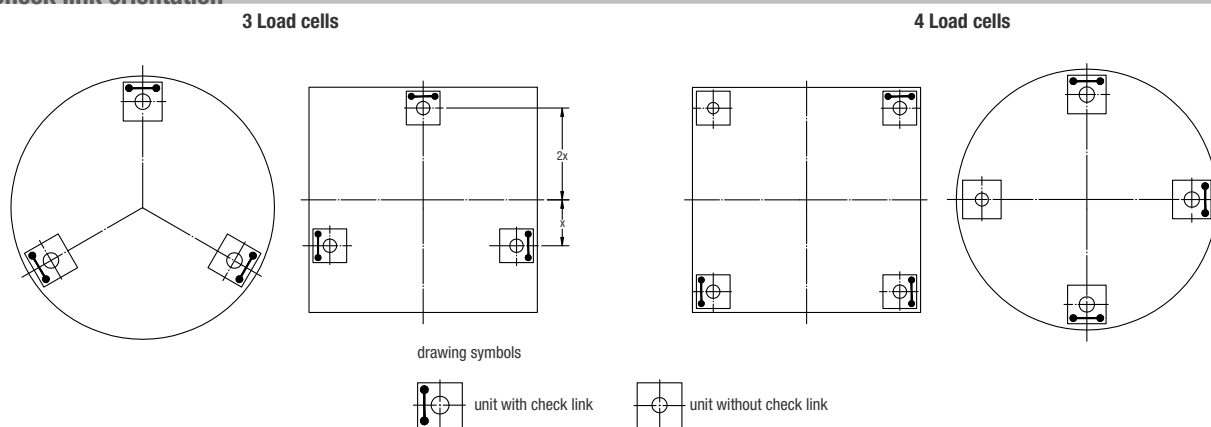


## Dimensions (in mm)



CAD files for customer's own application drawings are available for download from the Flintec homepage.

## Check link orientation



## Module assembled for shipment and installation

